

Annual Report
KETTLE'S YARD

22

23



UNIVERSITY OF CAMBRIDGE
MUSEUMS
& BOTANIC GARDEN



Contents

3	Comments
5	Introduction from the Director
7	Mission, Purpose & Values
9	Exhibitions
25	Events Programme
27	Collection, Research & Archive, Publications
31	Music
33	Learning
38	Community
41	Engagement
43	Communications
51	Governance & Staffing
53	Commercial Activity
57	Funding & Supporters
63	Accounts

'I loved doing an activity with the kids. Something I would not sit and do with them at home. They surprise me with all their ideas!' - Studio Sunday, May 2023

'One of my favourite places: thank you to all those who enable @kettlesyard to open its doors.'

- Visitor, April 2023

'Super impressed by kind staff, efficient online booking, delicious lunch, nice gift shop.' - Visitor comment, May 2023

'Powerful, practical, decorative, emotive and timely – talented stitchery, from these contemporary banners to historic clothing, all highlighting a rich and complex living tradition of Palestinian embroidery.'

- Visitor, July 2023

'Thanks to all at Kettle's Yard involved in our visit! We left feeling elated and know that the experience sets up our work ahead perfectly. The artist-led workshop, our learning guides and support were fab.' - Teacher after a schools visit, 2022

Introduction from the Director

Looking back over the diverse programme of activity last year, one theme which emerges is collaboration – with artists, writers, curators, schools and students and other institutions. So much of what has been achieved this year was made possible by collaboration.

A highlight of the community and learning programme was the innovative ART NOW project, generously supported by the Ragdoll Foundation. The students at Castle School (an inclusive school supporting SEND pupils) visited Kettle's Yard over a period of 18 months and collaborated with artist Georgia Akbar to create a stunning immersive artwork for their school hall.

The joyous exhibition *Paint Like the Swallow Sings Calypso* was possible because of the involvement of the three artists whose work and inspired curation were central to the exhibition: Paul Dash, Errol Lloyd and John Lyons. *Lucie Rie: The Adventure of Pottery* became one of the most visited exhibitions at Kettle's Yard, with the catalogue going into a second edition, demonstrating the power of Rie's beautiful pots. The exhibition was jointly conceived with MIMA in Middlesbrough. We ended the year with the extraordinary *Material Power: Palestinian Embroidery*, an exhibition that would not have been possible without the support of the incredible collectors whose passion means these important dresses and textiles have been preserved. The involvement of The Whitworth in Manchester was invaluable and as I write, the exhibition can still be enjoyed there.

The spotlight was on Jim Ede in May 2023 when Laura Freeman's biography 'Ways of Life' was published by Jonathan Cape. Laura spent many months at Kettle's Yard conducting research and we were delighted to be able to support her to complete this biography, which is a great addition to the published research about Jim and Helen Ede and Kettle's Yard.

In April, we made the difficult but necessary decision to charge for entry to the house at Kettle's Yard. I am enormously grateful to all the visitors who have continued to visit and to support Kettle's Yard during this time. It has been gratifying to see no reductions in visitor numbers or support since the introduction of the charge. The income raised from charging will enable us to continue to conserve the house and collection, undertake and be a catalyst for new research, and ensure our programme of activities reaches the widest audience.

Once again, I must end this introduction with thank yous. Firstly, to all our supporters from Arts Council England and major trusts and foundations to our many individual donors; all that is contained within this annual report would not be possible without your support. And, secondly, thank you to the whole team of staff and volunteers at Kettle's Yard, who work with great commitment and creativity all year round.

Andrew Nairne OBE, Director



Lucie Rie: The Adventure of Pottery, 2023, Kettle's Yard

Mission, Purpose & Values

Mission

To contribute to society by inspiring and engaging audiences through art, learning and research of the highest quality. We believe that great art should not be the privilege of the few, but for everyone. Our values reflect Kettle's Yard's creator Jim Ede's support for artists and belief in art's power to make us look again and change how we act in the world.

Purpose

- Conserving the House, collections and archive for present and future generations and as a resource for research.
- Presenting exhibitions of modern and contemporary art and concerts of classical and contemporary music.
- Welcoming and engaging diverse audiences through innovative learning programmes and public engagement
- Ensuring financial sustainability through governance and management, core funding, partnerships, earned income and the support of donors, trusts and foundations

Values

Openness

Encompassing our commitment to access, equality, anti-racism and enriching communities. Seeking to be generous and caring, making a programme of events and activities inspired by Jim and Helen Ede's vision of a place in which everyone is welcome and can be enriched.

Creativity

Fundamental to the ethos of Kettle's Yard, from inspiring visitors to be creative in their own lives and communities, to the diverse creativity of the artists we support and whose work we present, to how we think about the future of Kettle's Yard.

Collaboration

Working with others - to learn from them and achieve stronger and richer outcomes. Contributes to sustainability through adding value and efficiency when exhibitions and projects are organised collaboratively and shared widely.

Insight

As part of the university, we undertake, enable, and disseminate research to generate new insights about art and artists, so deepening knowledge and enriching public engagement. We can elicit valuable insights and learn and grow as an organisation through conversations - whether with children and young people, members of the community, visitors or among our colleagues.

Sustainability

There is a cost to our existence and our work. Addressing how we run Kettle's Yard to reduce our carbon footprint is essential. We need to act and plan to reduce waste of all kinds and strengthen our financial resilience to secure our long-term health and wellbeing. This runs across everything that we do.



Exhibitions

Paint Like the Swallow Sings Calypso: Impressions of Carnival by Paul Dash, Errol Lloyd & John Lyons in dialogue with works from The Fitzwilliam Museum & Kettle's Yard
12 November 2022 – 19 February 2023

Lucie Rie: The Adventure of Pottery
4 March – 25 June 2023

Material Power: Palestinian Embroidery
8 July – 29 October 2023



Material Power: Palestinian Embroidery, 2023. Photo: Jo Underhill

Paint Like the Swallow Sings Calypso, 2022. Photo: Jo Underhill



Lucie Rie: The Adventure of Pottery, 2023. Photo: Jo Underhill

**Paint Like the Swallow Sings Calypso:
12 November 2022 - 19 February 2023**

*'An exhibition that celebrates
the urge to celebrate'*

– The Guardian, November 2022

*'Loved this exhibition and
appreciated the connections it
reveals across cultures and
time.'*

– Facebook, November 2022

*'This is a show rich in
knowledge as well as images,
but perhaps most fascinating
in its juxtapositions of
continents and centuries...
This is both foreground and
background to the work of
three contemporary
Caribbean artists: the
venerable Paul Dash, Errol
Lloyd and John Lyons. Their
images of carnival are paired
with old art throughout to
startling effect.'*

– The Observer, November 2022



Paint Like the Swallow Sings Calypso

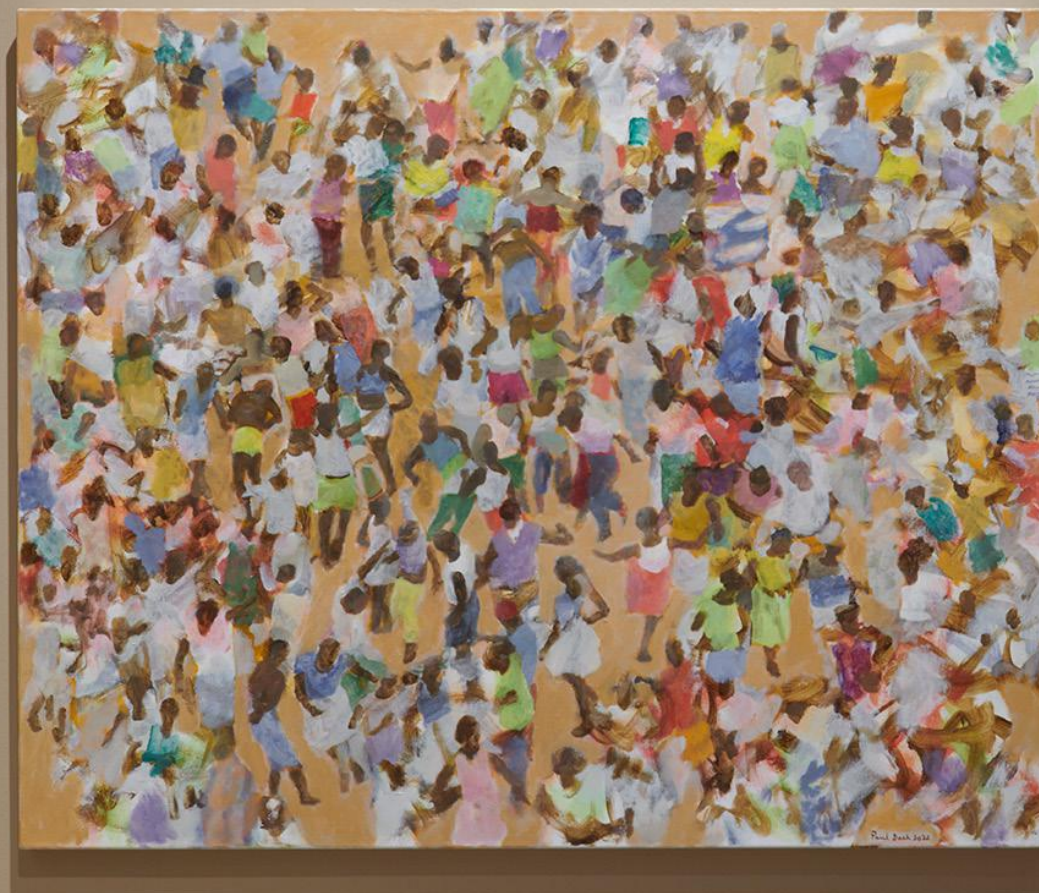
This major exhibition was curated in dialogue with artists Paul Dash (b. 1946, Barbados), Errol Lloyd (b. 1943, Jamaica) and John Lyons (b. 1933, Trinidad), three important first-generation diaspora Caribbean painters that were working in the UK during the same period that the Kettle's Yard house and collection was still being established.

Alongside a selection of their own works, the artists brought together the collections of Kettle's Yard and The Fitzwilliam Museum for the first time, assembling paintings and works on paper that reflect the rich history, themes and forms of Carnival, from street parades with music and dancing, to folklore, flora and fauna.

28 artists whose work span across five centuries reflected elements from Carnival's rituals and celebrations.

Featured Artists:

David Bomberg, Brueghel (Pieter, the younger), Jacques Callot, Giulio Carpioni, Avinash Chandra, Charles Conder, William Congdon, Paul Dash, Francisco Goya, Albrecht Dürer, Helen Frankenthaler, Henri Gaudier-Brzeska, Stanley William Hayter, Barbara Hepworth, David Jones, Nat Leeb, Errol Lloyd, John Lyons, Momper, the younger, Jean-Michel Moreau, Fritz Möser, Ben Nicholson, William Orpen, John Phillip, Pablo Picasso, Ceri Richards, Graham Sutherland, Agostino Veneziano.



Lucie Rie: The Adventure of Pottery
4 March – 25 June 2023

'The Lucie Rie exhibition was beautifully presented. The steel display tables complemented the pots, and I liked the way there weren't too many displayed in the same case. One could see all round each pot. Welcoming staff and ambience added to my enjoyment. The film upstairs added so much to my appreciation of Lucie Rie the person and the potter. This is a 5-star exhibition.'

– Visitor comment, April 2023

'Form and function unite in quiet perfection in an unmissable gathering of the potter's coveted work.'

– The Observer, March 2023

'This dazzling exhibition features more than 100 works created by the great 20th-century ceramicist throughout her 60-year career.'

– The Times, March 2023



Lucie Rie: The Adventure of Pottery, 2023. Photo: Jo Underhill

Lucie Rie: The Adventure of Pottery

This major exhibition celebrated one of the most significant potters of the twentieth century, offering a rare opportunity to experience Lucie Rie's (1902–1995) ground-breaking practice. The first survey of her pottery in the UK in over 20 years, *Lucie Rie: The Adventure of Pottery* featured more than 100 works, including bowls, vases, tableware and buttons.

Born in Vienna, Rie's early pots from the 1920s and 30s are infused with clarity and innovation, characteristics that informed her artistic approach throughout her working life. In 1938 she emigrated to London to escape Nazi persecution, a turning point in her life and work. As one of a small number of independent female potters working in Britain after the war, Rie was to forge her own path at odds with prevailing trends. Her remarkable body of work continues to inspire today.

Lucie Rie: The Adventure of Pottery was organised by Kettle's Yard, University of Cambridge and MIMA, part of Teesside University, in association with The Holburne Museum, Bath.



Lucie Rie: The Adventure of Pottery, 2023. Photo: Jo Underhill

Material Power: Palestinian Embroidery
8 July – 29 October 2023

'The exhibition is a living history, encouraging renewed reinterpretations of the craft.'

– Guardian, July 2023

'I simply cannot fit all my praise for Palestinian Embroidery at @kettlesyard into one tweet so please just trust me and go see it! Whether or not you are a textiles person the stories behind these objects are so compelling and so well told.'

– Twitter, August 2023

'A landmark exhibition.'

– Crafts Magazine, July 2023

'Very much enjoyed the Material Power exhibition on Palestinian embroidery @kettlesyard, a fascinating analysis of the links between embroidery, identity and protest.'

– Twitter, August 2023





Material Power: Palestinian Embroidery

Material Power: Palestinian Embroidery explored the historical life and contemporary significance of Palestinian embroidery. This ancient and beautiful practice remains an important living tradition and the most prominent cultural material of Palestine today. Curated by Rachel Dedman, the exhibition looked at the ways in which embroidery, primarily undertaken by women, has evolved through a century of turbulent history for the Palestinian people.

This was the first major exhibition of Palestinian embroidery in the UK for over 30 years, with more than 40 dresses and embroidered objects on display lent from important private collections in Jordan and Palestine.

Alongside historic dresses were artworks by six contemporary artists Bilab Bi Delo, Mona Hatoum, Khalil Rabah, Mounira Al Solh, Aya Haidar and Majd Abdel-Hamid, films of embroiderers speaking about their work by Maeve Brennan, and rarely seen archive material.

Material Power: Palestinian Embroidery was organised by Kettle's Yard in collaboration with the Whitworth, The University of Manchester, where it travelled to from 24 November 2023 – 7 April 2024.

Exhibitions - Digital

In 2022-23 we continued to produce and share some online content for exhibitions that could be viewed at home. These included filmed interviews with exhibition artists and curators, and recordings of panel discussions and other events. In total these received 2,243 plays.



[Watch this film to learn more about the Paint Like the Swallow Sings Calypso exhibition.](#)

Interview with Errol Lloyd, November 2022



[Watch this discussion to hear about Lucie Rie's buttons.](#)

Eliza Spindel and Kimberley Chandler in discussion about Lucie Rie's Buttons, June 2023.



Interview with Rachel Dedman, July 2023

[Watch an interview with curator of Material Power, Rachel Dedman](#)

[Watch 'Art To Go: Carnival Masks' with John Lyons](#)



[Listen to this panel discussion to learn more about the Lucie Rie exhibition](#)

Events Programme

From August 2022 to July 2023 we organised 107 events as part of our public programme. The events included online talks, concerts, exhibition tours, in conversations and family workshops. Our events programme reached a total of 6,591 people.

'Real honour to listen to Paul Dash at Kettle's Yard this afternoon on his artistic practice and influences'
-Twitter, attendee at an exhibition tour for *Paint Like the Swallow Sings Calypso*



CoLAB workshop, 2022. Photo: My Linh Le

[Listen to a panel discussion with Isabella Smith, Florian Gadsby, Kate Malone and Rich Miller about Lucie Rie](#)

'[Material Power] is really significant, particularly in light of recent events, they also have a wonderful event programme for young people and children. My five-year-old had her first encounter with embroidery, needles and thread and has been excited about it since...'

- Twitter, July 2023



Exhibition tour of *Lucie Rie: The Adventure of Pottery* with Katharina Klug, 2023. Photo: Zuzana Grubecka



Collection, Research & Archive, Publications

Loans

Works from the permanent collection have continued to feature in exhibitions and projects across the UK and internationally. Ben Nicholson's 'Jar and Goblet', 1925, travelled to the Ditchling Museum of Art and Craft for *Shoji Hamada: A Japanese Potter in Ditchling* (22 October 2022 – 16 April 2023). Barbara Hepworth's, 'Design', c. 1933, was loaned to *Barbara Hepworth: Art and Life* at Tate St Ives (26 November 2022 – 1 May 2023). 'Christopher Wood, Boy With Cat (Jean Bourgoingt)', 1926, was loaned internationally, displayed at Musée Marmottan-Monet, Paris, for *Theatres of Melancholy - The Neo-Romantics in Paris and Beyond* (8 March – 18 June 2023).

Research

The archive continued to receive a steady stream of enquiries and research visits with academics, students and artists arranging to visit or accessing material digitally; while items from the archive were included in the Research Space as part of *Lucie Rie: The Adventure of Pottery* (4 March 2023 – 25 June 2023).

In June 2023 Kettle's Yard hosted a workshop organised by the Radical Art in Cambridge research group, focussing on the history of the Kettle's Yard artists' residency programme in the 1970s and 1980s. The day's events consisted of an archive handling session, a moving image screening, and a conversation between independent researcher, art historian, curator, and former Director of Kettle's Yard Hilary Gresty and artist Mona Hatoum.

On 18 May a new book by Laura Freeman 'Ways of Life: Jim Ede and the Kettle's Yard Artists' was published by Jonathan Cape after a year of research. The book provided new insight into the lives of Jim Ede and the Kettle's Yard artists.



Lucie Rie: *The Adventure of Pottery*, archive display, 2023. Photo: Jo Underhill

CoLAB

In Summer 2022, Kettle's Yard worked with researcher Dr Louise Hickman from the Minderoo Centre for Technology at the University of Cambridge and artist Kaitlin Ferguson to creatively explore how technology and art can come together to consider the labour of care at Kettle's Yard, as part of a project called [CoLAB](#). Participants were excited that their voices were being heard by researchers and many have gained new skills and confidence approaching art and exploring their own creativity. The process resulted in a new toolkit for use by visitors and participants to Kettle's Yard.

Articulation

Our Community & Learning team hosted a Discovery Day on 6 July 2023, in collaboration with Articulation; a nationally acclaimed public speaking initiative for young people, designed to promote the appreciation and discussion of visual culture. 20 students from years 13 & 11 from Kent Academies Network schools visited. Students worked in small groups to learn more about specific artworks and artists from our collection; concluding the day by sharing a short presentation about their chosen work/artist.

School Readiness

Kettle's Yard's Community & Learning team has been working in partnership with researchers from the University's of Cambridge and Birmingham to explore how creativity can support children and their families in getting ready to start school. This work has resulted in a [new resource for parents and nursery teachers](#), full of creative ideas and activities to spark conversations, inspired by art collections.



The Wild Escape Earth Day display

Dissemination of Learning

Community Manager Karen Thomas was invited to share our learning at two events. The first was at a national Wild Escape programme partners event where our Community Manager shared the work Kettle's Yard have been undertaking to make the materials and resources used in Learning and Community workshops and projects more sustainable. The second, at the Cambridge Arts Network conference, sharing our work and impact of collaborating with communities to create new artworks.

Student Loan Scheme

In October 2022 the annual Student Loan Scheme saw 93 artworks lent to 72 students.

Publications

In 2022/23 we produced a publication to accompany the exhibition *Lucie Rie: The Adventure of Pottery*.

Published to coincide with the exhibition *Lucie Rie: The Adventure of Pottery*, the publication features photographs of over 100 works from private and public collections. Containing essays by leading writers in the field of modernist ceramics, it considers afresh the singular nature of Rie's achievement and reflects on her remarkable body of work, exceptional in its variety, elegance and experimentation and further demonstrates new research on works in the Kettle's Yard collection; with texts by Edmund de Waal, Tanya Harrod, Helen Ritchie, Eliza Spindel, Kimberley Chandler and Nigel Wood.

Now in its second edition, the catalogue is distributed globally via our new international distributors, ACC Books.

'Fantastic book to accompany the amazing Lucie Rie exhibition currently at Kettle's Yard.'

-Comment on the publication, April 2023

LUCIE
RIE



THE ADVENTURE OF POTTERY

Music

We held a total of 20 concerts at Kettle's Yard during the 2022-23 season and welcomed 1,613 attendees.

Chamber Music

During this period, Kettle's Yard Chamber Music Programmer Justin Lee once again put together a series of 15 chamber music concerts, all of which were sold out or highly attended. The most popular concerts were solo piano performers and string quartets, in particular the Nash Ensemble (The Jim and Helen Ede concert). Fenella Humphreys on solo violin played the final concert, with a full house for her return performance to Kettle's Yard. Further endorsement for music continues to emerge through actual and prospective donations from audience members and other sources.

New Music

New Music Curator Tom McKinney presented four concerts during the spring and summer of 2023. He built on his reputation for displaying the best of New Music and was rewarded by substantial audiences at all four concerts. Indian traditional singer Supriya Nagarajan with Lucy Nolan (harp) sold out, as did a concert with pianist Tim Horton. Under Tom McKinney's direction, Kettle's Yard is confirming its reputation as a venue for New Music.

Student Music

One evening student concert was held this year on 9 March 2023. Programmed by our Student Music Programmer it included a Wind Quartet, a classical guitarist and an oboist. A new style of student concert is planned at Kettle's Yard for the future.

'I so enjoyed last week's concert, in the best traditions of welcoming young musicians to Kettle's Yard' - Audience member, March 2023

'I was blown away by Peter Donohoe tonight. Absolutely mind-blowing. Thanks so much.' - Audience member, February 2023



Photo: My Linh Le



Downstairs extension, Kettle's Yard house, photo: Paul Allitt

Learning

In 2022/23 the Learning team ran a busy programme of activities, engaging students both in person and online.

Formal Education Sessions

From 1 August 2022 – 31 July 2023 we welcomed 185 formal education groups including 3,150 pupils and students and 768 teachers from primary through to higher education.

Teacher's Continuing Professional Development (CPD)

In 2022/23 Kettle's Yard developed and delivered two successful Teacher's CPD sessions inspired by our exhibitions and projects. Over thirty teachers took part in artist-led sessions inspired by *Lucie Rie: The Adventure of Pottery* and ART NOW, our innovative project in partnership with Castle School and artist Georgia Akbar.

North Cambridge Academy (NCA) Arts Ambassadors

In spring 2023 Kettle's Yard worked with artist Rachel Dormer to lead sessions with a group of 15 year 8 students from our strategic partner school, North Cambridge Academy. Inspired by the work of Lucie Rie and a visit to Katharina Klug's ceramics studio, the students developed new creative skills and attained the Arts Award Bronze qualification, becoming 'Arts Ambassadors', championing creativity within their school and community.

The Wild Escape

Kettle's Yard partnered with Chesterton Primary on The Wild Escape, a nationwide initiative. Pupils from years 3 to 6 worked with artist Jacquie Campbell to explore how trees are vital parts of our immediate ecology. Pupils and their families celebrated their creativity through a display at Kettle's Yard, in St Peter's churchyard on Earth Day, 2023.

ART NOW

ART NOW was an innovative partnership project between Kettle's Yard and Castle School, an inclusive school supporting SEND pupils in North Cambridge. The 18-month project was generously funded by Ragdoll Foundation and aimed to support SEND students to become an active voice in their own cultural lives. The students collaborated with artist Georgia Akbar to create a new artwork for their school following regular visits to Kettle's Yard and experimental artist-in-residence sessions within school led by Akbar. The resulting artwork continues to be engaged with at Castle School, and included in the school's timetable for 2023/24 academic year.

[Watch a film about ART NOW here.](#)

Kettle's Yard supported 293 young people to achieve an Arts Award qualification in 22/23.

Children & Families

1,861 children, young people and their families took part in Kettle's Yard's regular children and family events in 2022/23. This included a number of new and special programmes.

Public Programme

Over the period we welcomed 1,861 visitors to our children and family events. These included Early Years Studio for ages 0-4s, our free Studio Sundays and half term holiday workshops for ages 7-16. The Community and Learning team hosted relaxed Studio Sunday sessions for families who benefit from quieter and more focused engagement sessions.

Kettle's Yard also welcomed artists from the UK Centre for Carnival Arts to lead a special Studio Sunday inspired by *Paint Like the Swallow Sings Calypso*. As well as facilitating activities, the artists brought costumes and puppets to display and for children to try on, that have been created for recent events including the Notting Hill Carnival, the Commonwealth Games and UEFA Euro 2022.

2023 welcomed the return of the UCM Twilight at the Museums event. Families joined us to celebrate the creativity and experiences of Castle School and the ART NOW project, and the *Paint Like the Swallow Sings Calypso* exhibition. 240 people visited over 2 hours.

Art To Go

Alongside *Paint Like the Swallow Sings Calypso* Kettle's Yard commissioned a new Art to Go film with exhibition artist John Lyons and pupils from Arbury Primary school, enabling children and families to create their own carnival mask at home via a YouTube video.



Wild Escape Workshop, Chesterton Primary School, 2023. Photo: S. Chapman



ART NOW at Castle School, 2023, photo: Lloyd Mann

Twilight at the Museums, February 2023.



CoLAB workshop, photo: My Linh Le



Samba Drumming holiday workshop, 2023



Studio Sunday, 2023



Teachers CPD Evening, 2023

Audio Described Tour

Following from staff training by Mind's Eye Kettle's Yard hosted an Audio Described Tour of *Lucie Rie: The Adventure of Pottery* for 12 blind and partially sighted people.

The Button Workshop

Throughout April the Clore Learning Studio was transformed into a ceramic button studio inspired by Lucie Rie. Visitors were invited to make ceramic buttons and watch pottery demonstrations by local ceramicists. Over 6000 buttons were made and we are grateful to local charity, Rowan Humberstone, who supported with the firing of the buttons.

University of Cambridge Museums (UCM)

Kettle's Yard works with colleagues across the UCM on partnership projects. This year Kettle's Yard supported the UCM Legacies of Empire & Enslavement research and public programme, working to contribute to and support the development of the Collections Campaigns Chest, a resource for schools and community groups inspired by Thomas Clarkson's abolitionist campaigning tool. We also took part in our first Power Walk, introducing community members to objects in the Kettle's Yard collections which raised questions of power and power imbalance within the collection.

We played an active part in Summer at the Museums welcoming children and families in North Cambridge with the City Council's Children and Young People's Participation teams (ChYpPs). Kettle's Yard continues to project manage the UCM Young Carers partnership with Centre 33, working with young carers in Peterborough, Ely, South Cambridgeshire and Cambridge on activities inspired by the Unboxed Festival commission *Our Place in Space* and working with artist Rachel McGivern and collections from the Polar Museum, Whipple Museum, Fitzwilliam Museum and Kettle's Yard.

'Thanks for this event! My family loved it (as with all the family studio events you usually organise).' - Button Workshop, Twitter, April 2023

Community

Your Kettle's Yard

Working closely with our local community in North Cambridge is central to our work at Kettle's Yard. Your Kettle's Yard is a programme which welcomes our neighbours to collaborate with Kettle's Yard and artists to be creative and curious about the world.

The Kettlers

The Kettlers, a creative group of older people from North Cambridge, have met fortnightly with artist Lucy Steggals to creatively explore different corners of Kettle's Yard since 2018. The Kettlers have relished their time with Kettle's Yard but together they and the artist Lucy Steggals have decided to bring the group to a close. During this period The Kettlers worked together to create a legacy of their unique collaboration and process. This legacy is a deck of cards for other older people to use and make connections, conversations, and associations with objects in the Kettle's Yard house. The cards were launched at a celebration event in December 2022 which was filled with play, reminiscences, and feedback on the positive impact the programme has had on improving the lives and wellbeing of participants since 2018.



The Kettlers with their deck of cards, December 2022.

Arbury Carnival

Kettle's Yard has continued to partner with the volunteer-led Arbury Carnival and worked with groups and schools to create costumes and props for the carnival procession. Artists Sandra Scott and Hilary Cox Condon worked with families from The Red Hen Project, Arbury Primary families, Grove Primary Years 3 and 4 pupils and Castle School.

Talking Together in Cambridgeshire

Talking Together in Cambridgeshire is the county councils' programme to support young children's communication, literacy and language development. This year the programme sought to increase its impact across the county. Kettle's Yard has been working with community partners at The Red Hen Project, which has resulted in the publication of three co-created children's books. In 2023 we worked with Red Hen families to collate their learning of working with us and to inspire other families across Cambridgeshire. Working with illustrator Rose Feather, they created a zine sharing their own tips on encouraging their pre-school children to read together. This was shared through fun and creative workshops led by Feather at Littleport, Huntingdon, Cambourne and Ramsey libraries.



Arbury Carnival, 2023.



Button Workshop, 2023.

'Thanks for a nurturing and inspiring event!' - Talking Together in Cambridgeshire participant

CoLAB

During summer 2022, the Clore Learning Studio at Kettle's Yard transformed into a creative research lab and everyone was invited to take part in a pilot project, CoLAB, with artist Kaitlin Ferguson.

Ferguson hosted a series of discussions, workshops, open days and displays in an active, participatory studio space. The space was co-designed with community collaborators who also contributed to designing activities and sharing ideas from their own experiences of living with or caring for someone with disability.

CoLAB's themes were inspired by the research of Dr Louise Hickman at the Minderoo Centre for Technology and Democracy, based at CRAASH at the University of Cambridge. Hickman's research explores the future of work and labour, its relationship with technology, all through the lens of disability studies.

CoLAB's discussions resulted in conversations about inclusivity in museum and galleries, about sustainability in the work of artists and creativity and what role technology can have in bridging these ideas. Giving space for these important topics within the programme has moved our own work and ideas forward by hearing the concerns, experiences and suggestions of our community partners and audiences.

'Now I feel invested and listened to I want to come here more.'

- Reflection from CoLAB Community Collaborator



CoLAB, 2022, photo: My Linh Le

Engagement

**Website Unique
Pageviews
1,019,022**

**4,793 participants
in learning and
community
workshops and
events**

**96 in person
school visits to
Kettle's Yard**

**Total attendance from
1 August 2022 - 31 July 2023
116,124**

**Paint Like the
Swallow Sings
Calypso
26,508**

**Lucie Rie: The
Adventure of Pottery
50,154**

**Material Power:
Palestinian Embroidery
40,159***

**21 Learning and
Community
Partnerships**

*Total visitors to *Material Power* which extended beyond the period of this report to 29 October 2023.

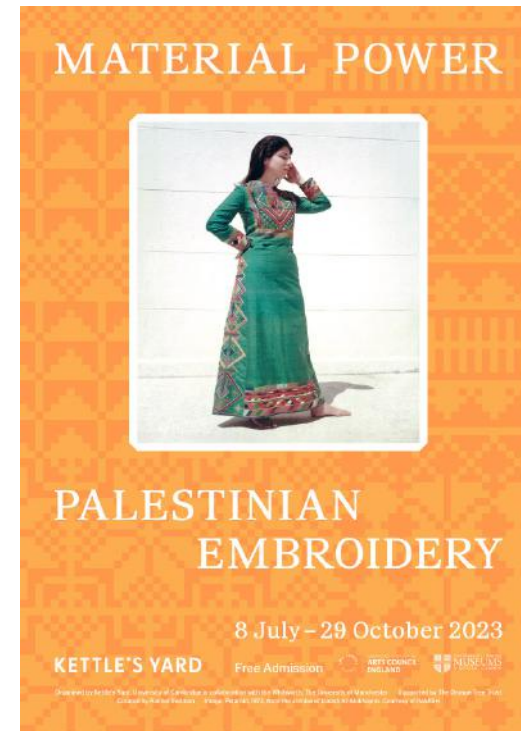
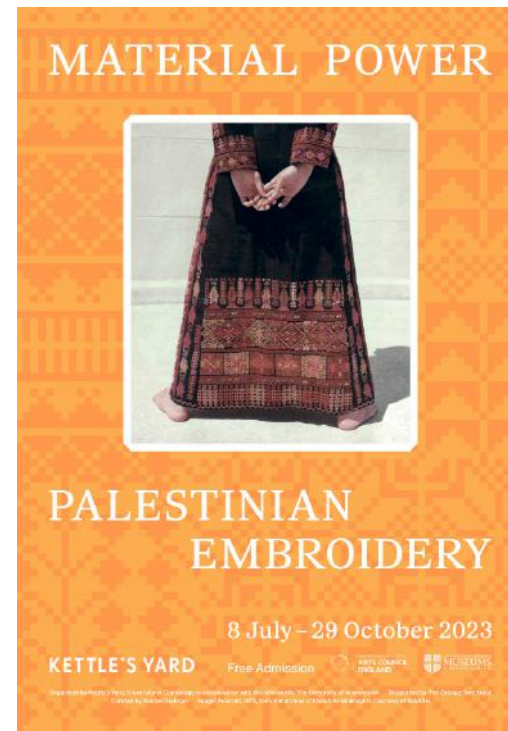
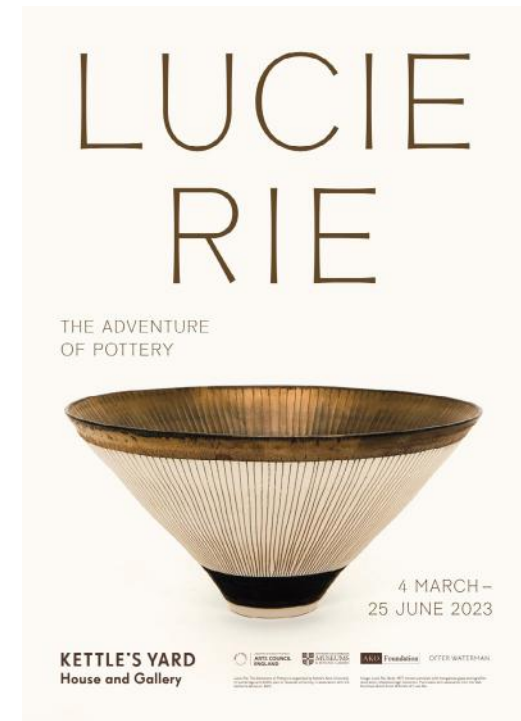
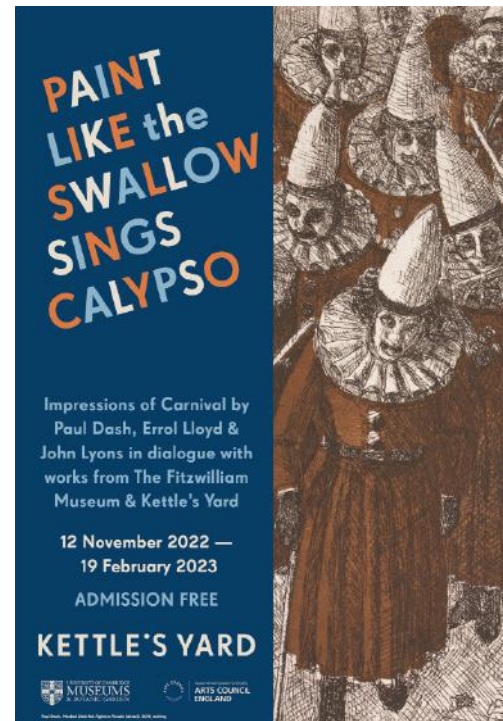
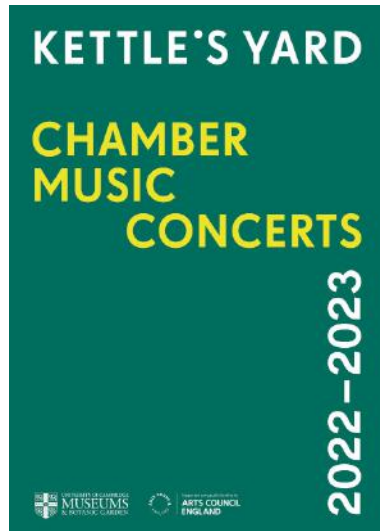
Communications

During 2022-23 Kettle's Yard continued to run focused print campaigns for exhibitions and music. With a focus on sustainability, print runs were reduced to minimise waste and recycled paper was used for the majority of printed materials. A new leaflet advertising the Kettle's Yard house was also introduced as we begun charging an admission fee for the house.

For the *Material Power: Palestinian Embroidery* exhibition, we produced a poster with three different image options. This allowed us to celebrate some of the imagery and create a strong visual identity for the exhibition.

During 2022-23 films, GIFs, artist interviews and other online content continued to be produced. There was growth on all social media platforms, particularly Instagram.

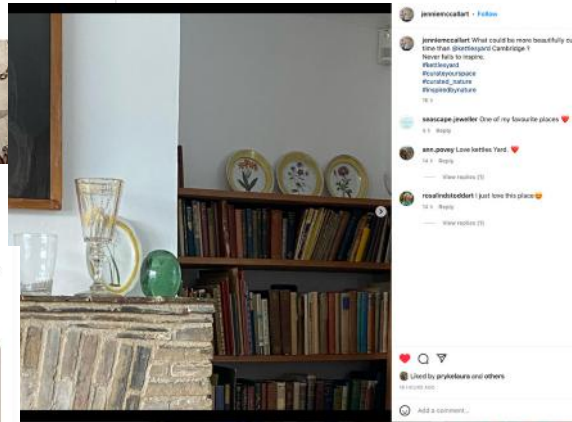
During this period we began working on a new website for Kettle's Yard. We worked with the web design agency Substrakt to produce a website that is more accesible, sustainable, bolder and easier for visitors to navigate. All staff at Kettle's Yard contributed in the early stages of the website redesign. Website visitors for the period were 240,062 and page views were 1,019,022.



Visitor Comments

Carol Atack @carolatack · 17h
 Loved 'Paint Like the Swallow Sings Calypso', now open @kettlesyard, and the connections it draws between celebrations of carnival across history. Great selection of works from @FitzMuseum_UK as well as the works of Paul Dash, Errol Lloyd and John Lyons.

Kettle's Yard @kettlesyard · Nov 12
 NOW OPEN: Paint Like the Swallow Sings Calypso ✨
 Visit the exhibition Tuesday - Sunday, 11am - 5pm until 19 February
 #KYCalypso
 kettlesyard.co.uk/calypso



Dr Una McCormack @unamccormack
 Nowhere like @kettlesyard, as the 9yo discovered today.



2:55 PM · Apr 14, 2023 · 377 Views

4 Likes



'I want to pass on my congratulations and thanks for the exhibition 'Paint Like the Swallow Sings Calypso' – informative, enriching, enjoyable with a touch of mischievous fun, and beautifully presented. Fabulous!'

– Visitor, January 2023

Pedro Rebelo-Guimar @GuimarPedro · Apr 2
 Visited master potter **Lucie Rie**'s exhibition @kettlesyard. It is worth every second! Left inspired 🤩 with some ideas to try out in the studio. Instructive and entertaining 1982 documentary with D Attenborough upstairs. Thank you @crackingpots for the heads up!



Kettle's Yard @kettlesyard · Mar 4
 Find out more about modernist potter and subject of our new exhibition #TheAdventureOfPottery in this article with @TheArtsSociety_ and author Isabella Smith.

1 Like · 337 Views

Andy Reynolds
 Local Guide · 88 reviews · 133 photos
 ★★★★★ 2 weeks ago NEW

A wonderful museum divided into two parts. The first is a museum with a changing list of temporary exhibitions. The second is a curated home with an incredible collection of mid 20th century furniture and art. Overall the effect is to create a harmonious and light-filled space to admire and enjoy the art.

Knowledgeable staff are able to guide your visit and give you an understanding of the history of the building, its inhabitants and the artists who contributed the works.

A very nice cafe and modern facilities complete your visit.

2 Likes

'Kettle's Yard is wonderfully relaxed and calm, with superb staff and the exhibition suited that atmosphere. I was particularly taken by the later extraordinarily delicate work of Rie.' – Visitor, April 2023

Lucie Whitmore @LucieWhitmore
 I simply cannot fit all my praise for Palestinian Embroidery at @kettlesyard into one tweet so please just trust me and go see it! Whether or not you are a textiles person the stories behind these objects are so compelling and so well told 🌀



Paul McGhee @OldRugBore
 Rachel Dedman has provided us with the best @kettlesyard show since Ai Wei Wei, with similar levels of passion, humanity, sensitivity and political purpose. I'll be going straight back for another dose.

#Palestinian #Embroidery.



'We really enjoyed our visit, the house is such an inspiring place. It's the first time I've visited an exhibition there - I will be back. The cafe was good with excellent food. Kettle's Yard is a fabulous place and the staff were all very friendly and helpful. The shop has a good range of retail items.'

– Visitor, May 2023

Media Coverage

In 2022/23 exhibitions *Paint Like the Swallow Sings Calypso*, *Lucie Rie: The Adventure of Pottery* and *Material Power: Palestinian Embroidery* received very positive press coverage. In particular, Lucie Rie attracted a wealth of national coverage including a 4 star review in The Times and 5 stars in The Observer.

EVE: 83422800



'I try to depict the sense of liberation: what carnival means to British-Caribbean artists'

Paul Dash, Errol Lloyd and John Lyons discuss their new exhibition exploring the celebration: its eclectic atmosphere, cultural significance and complex traditions

Kadish Morris
Thu 3 Jul 2023 10:07 (GMT)



© Habda Rashid. All rights reserved. 2023. Photograph: Courtesy of artist

Chanda Jones, the founder of London's thriving hill carnival, once said: "A people's art is the genesis of their freedom." With Jones' words in mind, it is fitting that three of the most significant British-Caribbean artists - Paul Dash, Errol Lloyd and John Lyons - have each focused in their practice to depict the historical and cultural significance of the event. In a forthcoming exhibition, *Paint Like the Swallow Sings Calypso* at Kettle's Yard in Cambridge, each artist's work evokes different memories, historical events and colour palettes that work together to summon the spirit of carnival. Alongside a selection of their own



7 AMAZING REASONS TO VISIT KETTLE'S YARD IN CAMBRIDGE

20 Jan 2023

When the founder of Kettle's Yard, Jim Ede, originally conceived his idea for a home that was also a gallery, he wanted "a living place where works of art could be enjoyed... Today, the once tumbledown cottages he purchased in 1956 are a key location on the arts map

An exterior view of Kettle's Yard. Image: Paul Allett

Where can you find Kettle's Yard?

Situated in Cambridge's historic centre, Kettle's Yard is easily reached by train, bus and car (not to mention bicycle, which many locals prefer). Beyond the famed spires of the university, the site was originally four workers' cottages, which were then restored and substantially remodelled.

Why should you visit?

This remarkable 'house museum' and gallery is unique in the fact that its founders, Jim and Helen Ede, still lived in the property when it first opened to the public in the 1960s. Every afternoon, during term time, they had an 'open house' with Jim personally guiding visitors around. The pair were entrenched in the art world; Jim held a curatorial post at the Tate and Helen had taught art. They were also known for their friendships with artists, and for throwing wonderful concerts and parties. In 1966 they gave the house and its contents to the University of Cambridge. Today, as well as taking in the atmospheric delights of the couple's original living

'This is a show rich in knowledge as well as images, but perhaps most fascinating in its juxtapositions of continents and centuries...'

– The Observer on *Paint Like the Swallow Sings Calypso*, November 2022

My favourite painting Habda Rashid *The Casting Call* by Noah Davis



The Casting Call, oil and acrylic on canvas, 40in by 60in, by Noah Davis (1983–2023), the estate of Noah Davis



Habda Rashid is senior curator of modern and contemporary art at Kettle's Yard and the Fitzwilliam Museum, University of Cambridge. The *Paint Like the Swallow Sings Calypso* exhibition at Kettle's Yard runs until February 19, 2023

"I have an interest in artists that create dialogue with historical art traditions within a contemporary setting and, in this work, I feel as if there is a conversation with Degas and his ballerinas. Daria's characteristic composition creates both tension and intimacy; the low-ceilinged room is crowded and, as with all of his works, his subjects' faces are obscured, so no contact with the viewer is really desired. There is a nod to abstraction with the prominence of a grid floor, which I feel is deliberate and aimed to interrupt any straight or representational reading of this scene, so you sense it's not a real place. Daria deliberately made his work accessible for a wide audience, it was important to him to do so, as well as engaging with art history and the language of painting, thereby also attracting art world work like me"

© Country Life / November 16, 2022

Charlotte Mullins comments on *The Casting Call*

LACIE RIE never gave in when she was told to stop. Her hands, stretched over her head, had been to add alluring contrasts, as if they were stained against. One woman falls and looks down, hands awkwardly by her sides. It is only then that we notice the glazed eyes of the first woman and the closed red doors. The ceiling presses down and the walls close in. The painter's title suggests these women are competing for a job, but what does that mean? Noah Davis's paintings often have a disquieting atmosphere, something we can't quite put our finger on. It's often fantastical elements, such as people on televisions, creep in and his work has an otherworldly feel, so it's no wonder that it's also attracting art world work like me"

THE TIMES

PAINT LIKE THE SWALLOW SINGS CALYPSO REVIEW — IT'S CARNIVAL TIME IN CAMBRIDGE

Kettle's Yard, Cambridge



Paul Dash, *Paint Like the Swallow Sings Calypso*, 1997, oil on canvas. COURTESY OF THE ARTIST

Largely courtesy of the nation's Protestant heritage, the carnival tradition in Britain is a muted affair. Elsewhere, however, in places where Catholic roots run closer to the surface, the instinct for ritualised abandonment remains vibrant. Carnival, Mardi Gras, bacchanalia, kermesse and masked balls offer a world temporarily without rules and spring from the urge to slough off daily cares and oppressions — customarily a final splurge before the privations of Lent.

Nowhere is this practice more alive than in the Caribbean, where the islands, in their slightly different ways, celebrate with music, dancing, dress and feasting. In *Paint Like the Swallow Sings Calypso* at Kettle's Yard in Cambridge, three West Indian artists look at their own experience of carnival in conjunction with works chosen from the Fitzwilliam Museum.

Paul Dash (born in Barbados in 1940), Errol Lloyd (born in Jamaica in 1943) and John Lyons (born in Trinidad in 1933) show their own work alongside pieces by the likes of Graham Sutherland and David Bomberg, Albrecht Dürer and Francisco Goya. At times the correlations can be a stretch and this is a very wordy exhibition with lengthy wall texts explaining correlations and shared

EVE: 4237

THE TIMES

FIRST NIGHT | VISUAL ART

Lucie Rie review — we should all go potty for the queen of ceramics

Kettle's Yard, Cambridge



Lucie Rie, *Black Footed Pot*, 1950, 10.5 in. high. © Estate of Lucie Rie

'The exhibition is a living history, encouraging renewed reinterpretations of the craft.'

– The Guardian on *Material Power: Palestinian Embroidery*, July 2022

'The pieces on display capture Rie's unflagging energy and inventiveness.'

– The Times on *Lucie Rie: The Adventure of Pottery*, March 2023



Rebellious robes and stitches from the civil war: the radical story of Palestinian embroidery

From dresses sewn using forbidden colours to the needlework of political prisoners, a new exhibition threads together a rich history of resistance



© Every stitch tells a story — a pinned dress from Habda Rashid

With its faded fabric and darned-up holes, the first Palestinian dress on display at Kettle's Yard in Cambridge might initially seem unremarkable. Unlike the opulent clothes elsewhere in the gallery, it's a thoroughly worn garment created for everyday wear. But it's also a fascinating window into the life of a rural woman from the Gaza region in the 1950s. The knee patch has replace fabric worn away from held and domestic work, while the gaps by the chest panel show alterations made for breastfeeding. The embroidered patterns are likely samples from past dresses or hand-me-downs from relatives. As with all of the embroidered clothes and items currently on view, it's an expression of class, gender and sociopolitical change.

"Embroidery is a practice that in itself feels so humble; the repetitive hand

The Guardian

News website of the year

The Observer
 Arts & Design

Paint Like the Swallow Sings Calypso Marcel Dzama: Child of Midnight review - let the revels begin



Marcel Dzama's Cambridge Box Exhibition, London
 Marcel Dzama's exhibition 'Box' at Kettle's Yard, Cambridge, is a celebration of his work in the 1990s and 2000s, featuring a range of his most iconic works.

A big, vibrant, and joyful exhibition of the work of the artist Marcel Dzama is on display at Kettle's Yard in Cambridge. The exhibition, titled 'Box', is a celebration of his work in the 1990s and 2000s, featuring a range of his most iconic works. The exhibition is a celebration of his work in the 1990s and 2000s, featuring a range of his most iconic works.

It's not Dzama's painting practice that we are here for, but rather his personality and his sense of humour. He is a man who is always smiling and who is always making us laugh. He is a man who is always smiling and who is always making us laugh.

Art Quarterly, Summer 2022

Curator's choice

Lucie Rie, the Vienna-born émigré who turned British ceramics into an art form

A new exhibition at Kettle's Yard hopes to cement Rie's status as one of the UK's leading 20th-century ceramists

Lucie Rie
 1902-2024

Lucie Rie occupies a somewhat special place in the visual arts spectrum, with her long career – particularly in the UK – of craft objects and their design. Her work is a blend of the traditional and the modern, and her influence is still felt today.

THE NEWSBINDER
 UK, CHESTER
 1 March 2023
 MHW 755,000
 EVE 162,000

THE ART NEWSPAPER

Lucie Rie, the Vienna-born émigré who turned British ceramics into an art form

A new exhibition at Kettle's Yard hopes to cement Rie's status as one of the UK's leading 20th-century ceramists



Lucie Rie at work in the 1950s, in the 1950s

Rie occupies a somewhat special place in the visual arts spectrum, with her long career – particularly in the UK – of craft objects and their design. Her work is a blend of the traditional and the modern, and her influence is still felt today.

A new exhibition, *Lucie Rie: The Adventure of Pottery*, which opens at Kettle's Yard in Cambridge this month, is dedicated to her work as an artist and as a woman.

THE ART NEWSPAPER

The transformation of British studio ceramics

The visionary creator of Kettle's Yard in the frame

School creates unique artwork with gallery

The school has created a unique artwork with a gallery, featuring a range of different styles and techniques. The artwork is a celebration of the school's creativity and imagination.

THE NEW STATESMAN

Ali Smith on the groundbreaking art of Lucie Rie

How the Austrian-born ceramist changed everything possible in pottery.

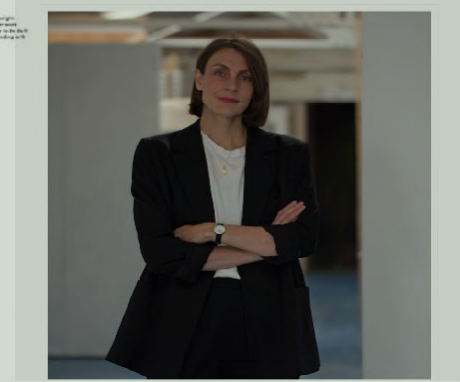
By Ali Smith



One of the wonders of the world is how we bring things into being. It is a miracle of the imagination, a miracle of the human mind. It is a miracle of the imagination, a miracle of the human mind.

FAD magazine

NGA FRASER APPOINTED SENIOR CURATOR, HOUSE & COLLECTION AT KETTLE'S YARD



NGA Fraser

Agenda

Inspiring young artists

From the 1990s to the present day, young artists have been making their mark on the art world. This exhibition celebrates their work and their contributions to the art world.

Political threads

Art has always been a reflection of the world around us. This exhibition explores the political and social issues that have shaped the art world over the years.

AnOther

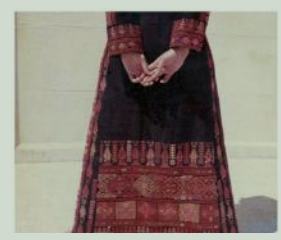
Brilliant Things to Do This July

DESIGN & LIVING / ANOTHER TO DO LIST

From inspiring group exhibitions to invigorating new eateries, here's our guide to July's most exciting cultural and culinary offerings

JULY 14, 2023
 TEXT: Daisy Woodford

Exhibitions



The best art to see outside London

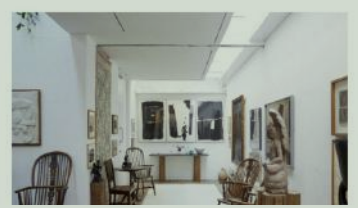
From TKE Studios' Summer Fair to former artist and collector's homes, these are the best art-filled days out!

JULY 14, 2023
 TEXT: Daisy Woodford

Hello art lovers! With the Bank Holiday coming up, what better way to spend it than a day-trip to one of the UK's best art-filled locations? From former homes and studios to summer fairs run by artists, this is my rundown of the best art days out.

Katy Xiao

6. Kettle's Yard, Cambridge



Governance & Staffing

Staff

In 2022-23 we welcomed several new staff and a number of staff moved to new roles: Florence Austin and Liz Bouyea joined as Retail Assistants, Helen Creber as our Learning and Engagement Coordinator, Emma Brown, Ellie Keeble, Vicky Axell, Shirley-Anne McAndrew and Giri Singh as Learning Hosts, Shikha Dwivedi as Administration and Reporting Assistant, Heather Boswell, Mac McNaughton, Sergio Santos, Hitomi Shinozaki, Amie Montecalvo, Andrew Bird and Senah Tuma joined as Visitor Assistants, Liz Wilkinson as Enterprise Manager, Laura Moseley as Digital Communications Assistant, Sam Teare joined as Finance and HR Assistant, Elena Pop (previously Finance and HR Assistant) took up the role of Finance Manager, and Lauren Clemmet (previously Duty Manager and Visitor Assistant) became Bookings and Concert Assistant.

In 2022-23 we said goodbye to the following staff: Lucinda Hooi, Freya Pryce and Kathryn Westmore.

Management Committee

We welcomed a new chair to the Kettle's Yard Management Committee in 2022-23 when Sonita Alleyne succeeded Bridget Kendall. In addition Rachel Kent and Sabine Jaccaud stepped down from the Committee.

The committee in July 2023 comprised: Sonita Alleyne (Chair), Marjolein Allen, Malavika Anderson, Sarah Griffin, Helen Harwood, Favaad Iqbal, Antoinette Jackson, Alyce Mahon, Suling Mead, Nichola Steele-Williams and Luke Syson.

Music Committee

The Music Committee in July 2023 comprised: Marjolein Allen (Chair), Emily Bretz, Chloe Davidson, Simon White, Susi Woodhouse, Sibylle Jackson, Justin Lee, Tom McKinney, James MacConnachie and Simon Fairclough (temporarily in lieu of Chloe Davidson).

Finance Committee

Antoinette Jackson (Chair), Rod Cantrill, Favaad Iqbal, Sabine Jaccaud and Nick Panatti.

Friends of Kettle's Yard Committee

John Irwin stepped down.

The Friends Committee in July 2023 comprised: Nichola Steele-Williams (Chair), Jeremy Barnett, Sebastian Carter, Penny Heath, Rolfe Kentish, Nicki Marrian, Louisa Riley-Smith and Martin Thompson.

We give many thanks to all of the voluntary Committee Members who give so much time and support to Kettle's Yard.



Commercial Activity

Shop

Net income for the shop as a whole increased by 37% in 2022/23, driven by the exhibition *Lucie Rie: The Adventure of Pottery*, which saw record-breaking sales in the shop. It followed a busy festive season, and the year ended with *Material Power: Palestinian Embroidery*, which exceeded expectations for shop sales.

A successful Christmas trading period led to another strong year online, with net sales up by 9%. A returning customer rate (customers who have placed more than one order with us) of just over 20% showed that Kettle's Yard is building a loyal customer base keen to support Kettle's Yard through the online shop.

To celebrate the Lucie Rie exhibition, the shop greatly expanded its range of ceramics from local and UK makers. This included commissioning three limited edition bowls from local potter Katharina Klug, and miniatures from London-based Studio Janneke. For *Material Power*, the shop stocked embroidery kits and tote bags by Folkglory, who promote Levantine textile crafts and heritage through their products.

We remain dedicated to improving the environmental sustainability of shop products and practice. A new till system enabled a switch to paper receipts no longer being offered as default, and we continue to reuse packing materials from wholesale orders for packaging online orders where possible. Our latest tote bag, featuring the Kettle's Yard Spiral of Pebbles, was made using rPET – a cotton-like fabric made from recycled plastic bottles.

Café

This year the Garden Kitchen café extended its exclusively vegetarian and vegan menu to offer soups, salads, sandwiches, wraps, a daily special dish and a cheese board, together with locally made ice creams, homemade cakes and a large range of coffees and loose leaf teas, pressés and wines. It has recently introduced a range of locally brewed craft beers which have proven to be very popular.

This year the revenue from The Garden Kitchen has grown by 58% over the previous year.

"The café food is absolutely delicious and I would highly recommend." - Visitor to The Garden Kitchen café

Katharina Klug limited edition bowls. Photo: Zuza Grubecka



Shop products in the house, photo: Beth Davis





Venue Hire

In March 2023 a new post was added to the Kettle's Yard team with the appointment of an Enterprise Manager. The priorities for this grant funded role is to develop a strategy to grow revenue from commercial enterprises, in particular Venue Hire which has been slow to return post Covid-19, and to identify and explore new commercial opportunities.

Since May 2023 the level of private events has increased both in number and value attracting a range of private hires from Cambridge organisations including a formal Vice Chancellor's dinner, a drinks reception as part of Cambridge Tech Week and the CSVPA Graduation Celebration and Fashion show. We also welcomed several London based clients looking for a unique and special venue for their event and one from the USA. Customer and guest feedback from these events has been very positive.

A portfolio of partner suppliers has been built to enable us to deliver a wide variety of high-quality private events in our spaces to maximise future revenue. These include four catering companies offering a wide range of delicious contemporary, sustainably, and predominantly locally sourced food with vegetarian, vegan and gluten free options. All have a policy of minimising plastic usage and food waste in line with Kettle's Yard's own values.

[Download the Venue Hire brochure here](#)

'Feedback from all our guests was that the day was perfect and that the venue was unique, personal and incredibly beautiful. The Kettle's Yard team couldn't have been more efficient and took good care of us throughout the planning process.' - Venue Hire for a lunch in the house

Funding & Supporters

2022-23 has been a year to celebrate and it would not have been possible without donations from individual givers, Trusts and Foundations, Arts Council England and the University of Cambridge. Kettle's Yard gives heartfelt thanks to all those who have supported exhibitions, music, joined the Friends and Patrons schemes, become corporate partners and donated on site. Thank you for all you have helped us achieve.

Patrons

The Patrons continue to be a vital source of regular income for Kettle's Yard contributing to overall core costs as well as individual projects and exhibition circles. Their generous support enables Kettle's Yard to commission artists, plan conservation projects and deliver an innovative programme.

This year a varied events programme both online and in person was presented, including exclusive visits to exhibitions held at institutions including Tate Britain, Tate Modern and the Design Museum. Intimate tours and online talks were offered by the Kettle's Yard curatorial team and the Director, focusing on their experience putting on exhibitions with world-renowned artists.

The Friends of Kettle's Yard

The Friends of Kettle's Yard have had another strong year, raising over £44,000 through their membership and events programmes. This year we held 4 onsite events and 9 offsite events. These engaging and varied events included, exclusive visits to private collections, talks from international artists and designers, and behind-the-scenes tours of local galleries.

The Friends financial contribution this year enabled essential conservation and preservation of our artworks and objects, as well as vital outreach to our community, ensuring we achieve our vision of making art accessible to all. The Friends provided a grant to cover the costs of the installation of a ramp in the Kettle's Yard house which has already been instrumental in increasing accessibility for our visitors and community groups.

The Friends of Kettle's Yard also provided a grant for the Development Assistant salary of £16,500, enabling the organisation to administer and steward this vital donor database and assist the Events Committee where needed.

Exhibition Circle

The Exhibition Circle for *Lucie Rie: The Adventure of Pottery* was hugely supportive. Donations from generous individuals and Trusts and Foundations raised over £131,200 to cover the costs of the accompanying publication and contribute to exhibition and project costs.

The Exhibition Circles for *Paint Like the Swallow Sings Calypso* and *Material Power: Palestinian Embroidery*, were also supportive, raising £8,000 and £26,750 respectively.

Partnerships

We continued to receive valuable financial and in-kind support from Murray Edwards College, Anna's Flower Farm, EY, Tayabali & White, Eve Waldron Design, A Practice for Everyday Life and Langham Press.

Music

The continued success of our New Music and Chamber Music Programmes this year prompted over £11,000 in donations to the Music fund.

Thank you.



Jennifer Crompton and Jennifer Lee at the Kettle's Yard 5 Year Anniversary Party, February 2023.
Photo: My Linh Le



Jonathan Anderson in conversation with Anthea Hamilton and Aimee Farrell, Friends of Kettle's Yard event, November 2022. Photo: Phil Hewitt



Andrew Nairne, Sarah Griffin, Jennifer Lee and Jamie Fobert at the Kettle's Yard 5 Year Anniversary Party, February 2023. Photo: My Linh Le



Material Power: Palestinian Embroidery Patron's tour, July 2023. Photo: My Linh Le



Paint Like the Swallow Sings Calypso Patron's tour, November 2022. Photo: My Linh Le

Supporters 2022/23

Public Investment

Arts Council England
Research England

Director's Circle

Dr Carol Atack and Alex van Someren, Sir Charles and Lady Chadwyck-Healey, John and Jennifer Crompton, Samantha de Reus and Felix Zhang, Sarah and Gerard Griffin, Dr Andy Harter CBE and Lily Bacon, Ruth Rattenbury, Robert Sansom & Edith Eligator, Guy Vesey.

Ede Circle

Michael Allen OBE and Marjolein Wytzes, Stuart Ansell, Roger Bamber and Nicky Napier, Dr Sophie Bowness, Eve Corder, David Cleevly CBE and Rosalind Cleevly, Jennifer Crouch, Dr Claire and Professor Martin Daunton, Emma Davis, Sean Gorvy, Tim Llewellyn OBE, Anne Lonsdale CBE, Nicki and Christie Marrian, James and Melanie McLaren, Suling Chan Mead, Keith Moffat, Jonathan and Nicole Scott, Professor Elizabeth Simpson OBE, Alan Swerdlow and Jeremy Greenwood, Robin Vousden, Stuart Wilkinson, Lord Wilson of Dinton.

Supporters

AKO Foundation, Amberstone Trust, Richard Anderson, Arts Council England, The Barakat Trust, Nicole Bellamy and Edward Hubbard, Lady Bessborough, Neil Blair, The Andrew and Fiona Blake Trust Fund, Ivor Braka, Elizabeth Brooks, Cambridge City Council, Cambridge County Council, The Clore Duffield Foundation, Andrey Gerstev, Nicholas and Judith Goodison's Charitable Trust, Alex Haidas and Thalia Chryssikou, Paul and

Daisy Havranek, Penny Heath, Sabine Jaccaud, Kristen and Bill Kennish, Helene and Mark Kotter, LOEWE Foundation, Jeremy Lewison Ltd, Polly Mallinson, Lindy Mason, The Orange Tree Trust, Simon and Midge Palley, The Paul Mellon Centre, The Polonsky Foundation, The Porthmeor Fund, The Roden Family Foundation and the Prism Charitable Trust, The Ragdoll Foundation, The Ruddock Foundation for the Arts, Jane and Robert Sackville-West, Dasha Shenkman OBE, The Sybil Trust, Ministry of Culture Taiwan, University of Cambridge, Ben Williams Advisory Ltd, Tanya Zein and the Jaccaud family

Corporate Support

Anna's Flower Farm, Murray Edwards College, A Practice for Everyday Life, Langham Press, LOEWE, Offer Waterman, Oxford Ceramics Gallery, Phillips, EY, Erksine Hall & Coe, Eve Waldron Design, Tayabali & White.

With special thanks to our Friends of Kettle's Yard and all those who wish to remain anonymous.

Thank you to the following



Supported using public funding by
ARTS COUNCIL ENGLAND



PHILLIPS

OFFER WATERMAN

LOEWE FOUNDATION

TAYABALI & WHITE
ACCOUNTANCY | TAX | CONSULTING



A Practice for Everyday Life

EVE WALDRON DESIGN

Anna's Flower Farm

ORANGE TREE TRUST



ArtFund

TATE PLUS

Accounts

The net income position at the end of financial year 2022-23 demonstrates a strong recovery after the Covid-19 lockdown period. Income has been augmented by support from the University to help Kettle's Yard build its endowment fund. Charging for house visits was introduced during the year, providing an additional source of income, while trading income remains strong. Some costs have been delayed during the period and should start to appear in the accounts next year.

	Income	Expenditure	Surplus/ (Deficit)
Core funding	1,289,480	1,436,200	(146,721)
Exhibitions	222,437	287,464	(65,027)
House	2,733	4,903	(2,170)
Music	75,746	43,224	32,522
Education	36,558	28,966	(7,593)
Community	53,278	36,779	16,499
Individual Giving	227,082	49,087	177,995
Trading	526,496	294,000	232,496
Surplus/(Deficit) before planned expenditure from reserves in 2022-23	2,433,811	2,180,623	253,188

Assets

Unrestricted Reserves

Balance carried forward - Free reserves	708,925
Balance carried forward - Unrestricted general funds held in investments	425,198

Specific and Designated Reserves

Balance carried forward	1,607,076
-------------------------	-----------

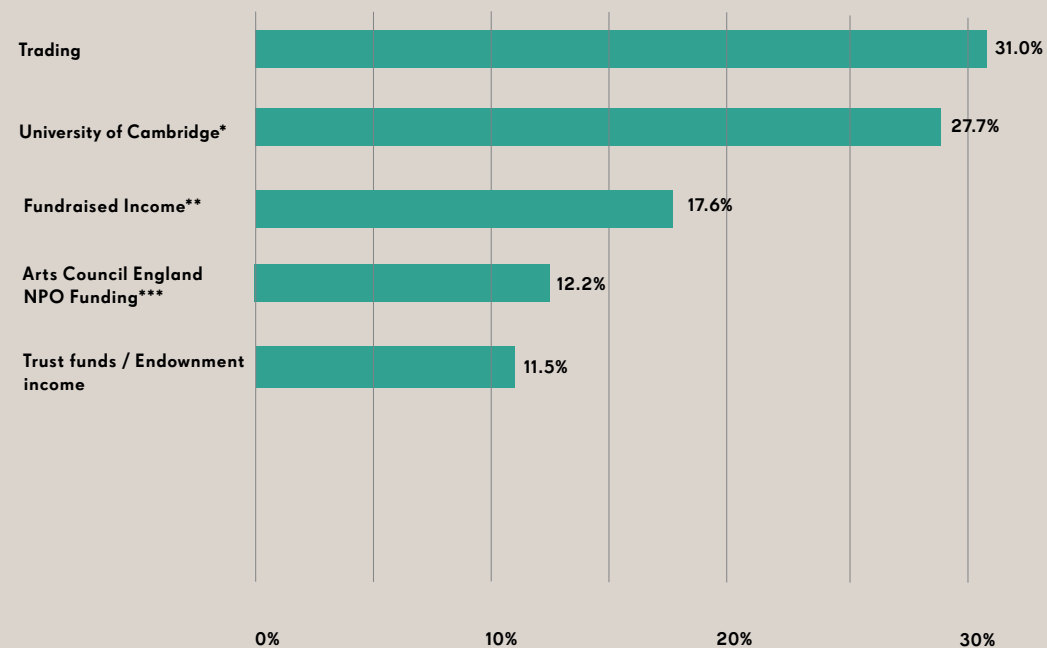
Permanent Endowment Account

Balance carried forward	6,660,187
-------------------------	-----------

Total Assets

9,401,396

Funding



* includes funding from University of Cambridge to support growth of the Endowment Jim and Helen Ede Fund.

** includes £12,500 project grant from Cambridge City Council

*** NPO = National Portfolio Organisations

