

KETTLE'S YARD

Hosting your event





All income generated through events supports the conservation and care of the collection and the development of our on-going education and exhibition programmes.

“Kettle’s Yard is a very special place and we are delighted to share it with you. As Jim Ede said, it is only alive when used.”

Andrew Nairne OBE,
Director of Kettle’s Yard

Contents

- 2 Kettle’s Yard
- 4 A unique venue
- 6 Dinner parties
- 8 Drinks receptions and private views
- 10 Summer soirées
- 12 Meeting rooms
- 15 Filming and photography
- 16 Our specialist partners
- 18 The Garden Kitchen café
- 19 Contact us
- 20 Other ways of supporting Kettle’s Yard

Opposite
Lucie Rie: The Adventure of Pottery, 2023
and cover photographs, Chris Boland

Kettle's Yard: a place like no other

Kettle's Yard is a unique place hidden away in the oldest part of Cambridge, a beautiful house filled with exceptional objects. The house was created by a remarkable couple, Jim and Helen Ede, and contains their personal collection of twentieth century British and European art.

Alongside paintings, sculpture and ceramics are found treasures and natural objects that caught Jim's eye. Each corner of the house has been arranged meticulously to reflect the sunlight streaming through a window or to emphasise a particular tone in a painting. Many describe the Kettle's Yard house as an artwork in its own right.

The house is by and large as Jim and Helen left it, a light and tranquil place that is open to visitors to come and spend time in. In addition to the permanent collection, Kettle's Yard hosts major exhibitions in new gallery spaces. Recent ones have included Antony Gormley, Ai Weiwei and modernist potter Lucie Rie.

The concept of Kettle's Yard was a very modern one and pioneered the idea of the house-gallery, placing art in a domestic setting to inform and enhance everyday lives.

For many people Kettle's Yard is a place that has that rare power of changing how we see the world and our place within it.

"My favourite place in the whole world."

Cambridge University Student



Photograph, Paul Allitt

A unique venue

The inspiring house with its remarkable collection of modern art is where you and your guests will dine surrounded by some of the most significant artists of the last century.

Two beautiful gallery spaces, designed by Jamie Fobert Architects, are the perfect backdrop for an after hours event. On a warm evening your guests can spill out into the courtyard and the cottage garden.



“The new Kettle’s Yard is a must-visit... a timeless capsule of a sensibility, a philosophy and a way of life; brimming with fleeting moments of splendour.”

Why you need to visit Kettle’s Yard
Vogue, March 2018

Howardena Pindell:
A New Language, 2022
Photograph, Jo Underhill



Photograph, Paul Allitt



Photograph, Ian Olsson

Exceptionally special dinner parties

The house at Kettle's Yard is the perfect setting for an intimate and special dinner party surrounded by extraordinary art.

We work with a small number of catering companies, all of whom cook modern, imaginative food using responsibly and locally sourced ingredients including vegan and gluten free options.

We also have an excellent wine list which has been expertly curated by our wine merchant, and an events team who will help you plan your party and ensure that it is delivered to the highest standard.

Capacity:

36 seated for dinner

Available from £3000

"It was fantastic to work with the Kettle's Yard team. They were extremely professional and understanding and the final result was a fabulous event. ... it was wonderful for the guests to have dinner in such a magical location, whilst being serenaded by music. We hope to work here again in the future."

Victoria Dashwood-Chase
Founder, House of Party Planning

"Feedback from all our guests was that the day was perfect and the venue unique, personal and incredibly beautiful."

Francesca Andrews after her
Engagement Lunch



Above and top photographs, Chris Boland

Above and far left photographs, Ian Olsson

Drinks receptions and private views

At Kettle's Yard we have a bespoke approach to event planning.

Whether it is an evening event with a bar, mixologists, lighting and music or a sophisticated lunch party with champagne and canapés, we will mix and match our spaces to fit your party.

You can add an exclusive private viewing of our latest exhibition or a curator-led tour of the house to complete your evening.

Capacity:

300 standing

Available from £2000

"The tour of the exhibition was fantastic and all our guests were very happy... the guide was excellent and all of our hosts really lovely and welcoming. Thank you very much for a wonderful evening."

Claire Forrester
Campaign Manager, Ernst and Young



Photograph, Daniela Florez



Above and top photograph, Chris Boland



Above and left photographs, My Linh Le

Summer soirées

Kettle's Yard has several lovely outside spaces for the warmer months of the year. The courtyard outside the main entrance is an elegant place to hold a summer drinks party underneath the fig tree and fairy lights. The neighbouring churchyard with its abundant wild flowers is the perfect place for a delicious picnic with rugs and deckchairs.

St Peter's Church, the smallest church in Cambridge, was originally built in the eleventh century and still retains traces of its Saxon past. It also has a memorial stone for Jim Ede, the creator of Kettle's Yard, a reminder of how much he loved the church and helped preserve it. The church and the churchyard are available to hire for events in conjunction with Kettle's Yard.

Capacity of courtyard and welcome area: 60/80

Available from: £1000

**St Peter's Church and churchyard
Capacity: 80**

Price on application



"...the utter delight of Jim and Helen Ede's house must be one of the greatest gifts to the art world..."

Visitor to Kettle's Yard
on Tripadvisor



Above and top photographs, My Linh Le

Above and far left photographs, Ian Olsson

Ede Room

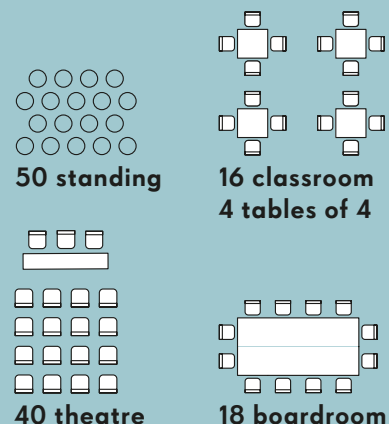
The Ede Room is located on the second floor of the new education wing and is accessible by lift and stairs.

This light and versatile room is equipped with a fully integrated 96 inch HD screen with multiple AV connections and WiFi for presentations.

It is an ideal space for meetings of all kinds, away days, creative workshops, small lectures and discussion groups, formal and informal presentations.

Ede Room rates:

From £500



Above and top right photographs, Chris Boland

Clore Learning Studio

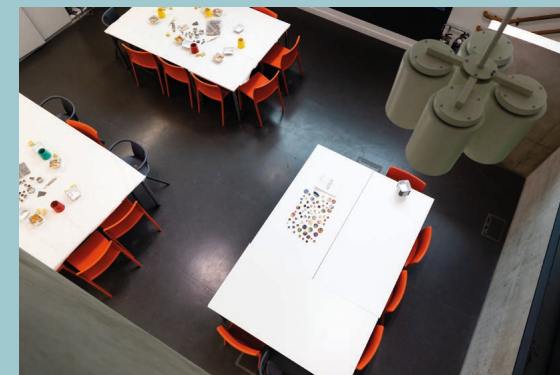
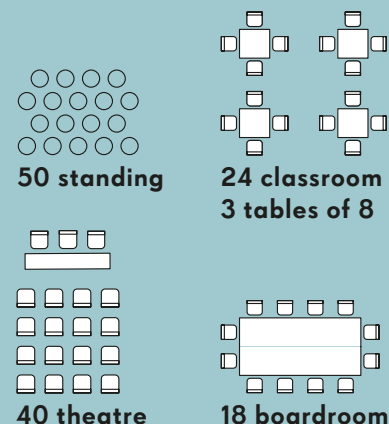
The Clore Learning Studio is on the lower ground floor at Kettle's Yard and is accessible by lift or stairs.

It is equipped with a fully integrated HD screen with multiply AV connections and WiFi.

This is a versatile self-contained space with a balcony and its own staircase, and is perfect for presentations, workshops and other creative activities. Additionally, it makes a great bar space for evening drinks parties when it is transformed by lighting and music.

Clore Learning Studio rates:

From £500

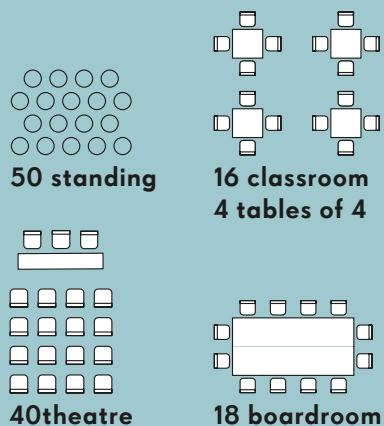


Above two photographs, Ian Olsson

Edlis Neeson Research Space

Located on the first floor of Kettle's Yard is the Research Space, a light and cool room which is used for meetings, talks and film screenings. It also has a spacious landing which has been used as a bar area at evening receptions.

Edlis Neeson Research Space rates:
From £500

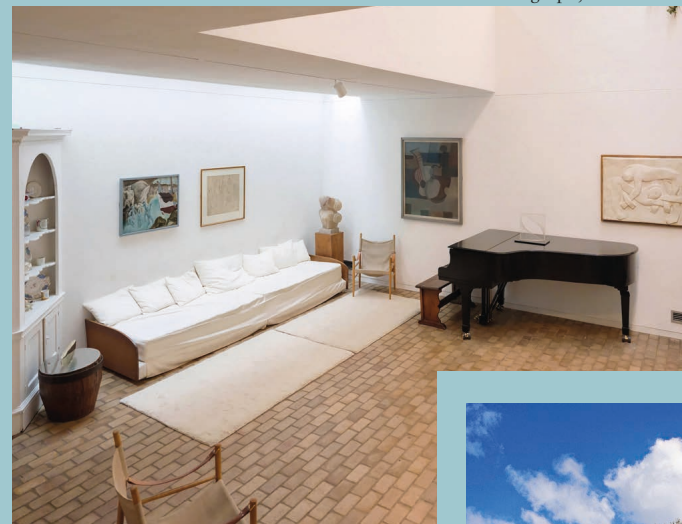


Filming and photography

The variety of its buildings and spaces make Kettle's Yard a much sought after location for filming and photographic shoots. Recent clients have included Zara, Marfa Magazine, Elle Decoration, JW Anderson, Cambridge School of Visual and Performing Arts.

Price on application

Photograph, Chris Boland



Above, right and top right photographs, Ian Olsson

Photograph, Paul Allitt

Our specialist partners

Food

All our catering partners have a policy of responsible sourcing, using local and seasonal produce wherever possible, minimising plastic use and waste in line with Kettle's Yard's values.

The Garden Kitchen at Kettle's Yard

Castle Street,
Cambridge CB3 0AQ
01223 761884
gardenkitchenky@gmail.com
www.thegardenkitchen.uk

Puddini: unique catering

Unit 2A Highgate Farm
Over Road, Willingham
Cambridgeshire CB24 5EU
01954 263028
info@puddini.co.uk
www.puddini.co.uk

Carte Blanche Catering

Bury Farm Parlour
Bury Farm
Nuthampstead, Nr. Royston
Hertfordshire SG8 8NG
01763 848212
maz@carteblanhecatering.co.uk
www.carteblanhecatering.co.uk

Cambridge Dining Company

Button End, Harston
Cambridge CB22 7GX
01223 874333
info@cdc.events
www.cdc.events

Drinks

The Master Mixologist

07432 872797
info@mypartyevents.co.uk

Bar Art District

07191 13692
www.barartdistrict.com

Catering equipment hire

Banqueting Hire Service

Thistledown
Station Road, Tivetshall St. Margaret
Norwich
NR15 2DL
01379 676008
service@banquetinghire.co.uk

Furniture hire

Funky Furniture Hire

0203 328 5446
info@funkyfurniturehire.co.uk

Flowers

Anna's Flower Farm

Audley End Road, Audley End
Saffron Waldon
Essex
07854 882831
anna@annasflowerfarm.co.uk

Petals and Crumbs

petalsandcrumbs@hotmail.com
07725 747171
www.petalsandcrumbs.co.uk

AV equipment hire and technical support

Absolute

01763 852222
info@absoluteavs.co.uk
www.absoluteavs.co.uk

AVXpert

01480 587556
info@avxpert.co.uk
www.avxpert.co.uk

Photographers

Ian Olsson Photography

studio@iolsson.com
07731 379727
Contact: Ian Olsson

Chris Boland

hellochrisboland@gmail.com
07490 700324
Contact: Chris Boland

Design

Paul Allitt Design

design@paulallitt.com
www.paulallitt.com



Photograph, Kettle's Yard staff



Photograph, Ian Olsson



This and top photographs, Chris Boland

The Garden Kitchen Café at Kettle's Yard

The Garden Kitchen café has a menu of locally sourced and seasonally inspired vegetarian and vegan dishes. It includes soups, salads, sandwiches, wraps, locally made ice cream and a selection of delicious homemade cakes. To drink there is a variety of coffees, loose leaf teas and beers from a local craft brewery.

The Garden Kitchen café at Kettle's Yard provide in house catering for meetings, or if you would prefer a change of scene at lunchtime we can reserve you a table in the café.



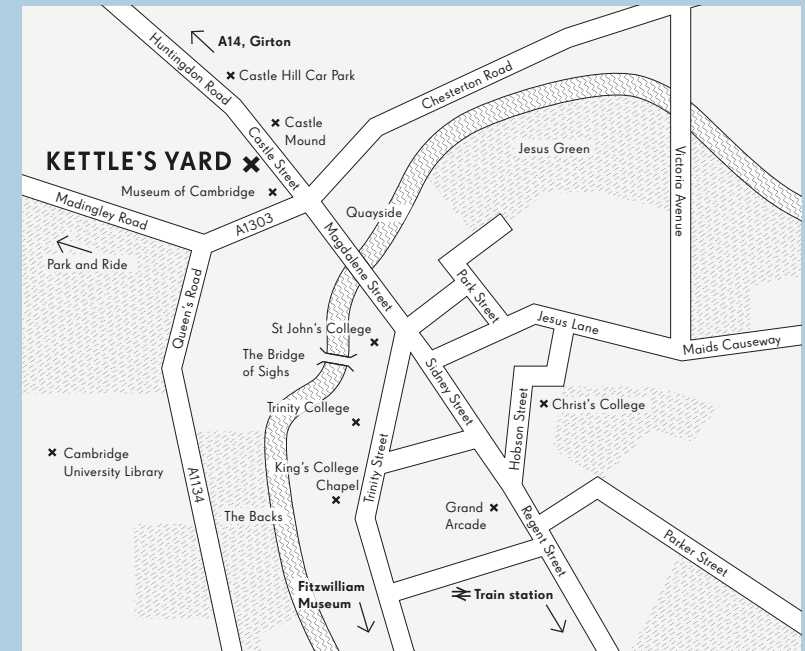
Photographs, Ian Olsson

Contact us to host your next event at Kettle's Yard

To discuss an event please call or email:

01223 748 100

events@kettlesyard.cam.ac.uk



Community and charity venue hire

We are able to offer free, one off venue hire to Cambridge based community groups who receive a Cambridge City Council Community grant of less than £5000 or are members of Cambridge Community and Voluntary Services (CCVS).

This is available on weekdays, during office hours, for either the Ede Room or the Clore Learning Studio as available.

We are also happy to offer a discount on our price list to registered charities.

Other ways of supporting Kettle's Yard

Kettle's Yard is a world class gallery which offers corporate sponsors the flexibility of a bespoke partnership. Whether you are looking to enhance your profile, reach new audiences or motivate your employees, we work with you to provide a tailor-made package of benefits to suit your requirements. We will also collaborate with you creatively to achieve a shared vision and goals that align with your business interests and needs.

Kettle's Yard is a registered charity and all funds generated through corporate support go towards supporting our commitment that everyone has the opportunity to experience the transformative quality of art.

Ways your business or organisation can show their support include:

- Innovative corporate partnerships, including one-off sponsorship afforded to a selection of our world-class exhibitions
- Sponsorship of award-winning learning programmes or support of family activities
- Profile-raising annual Corporate Membership which offers a range of benefits to your employees

"Thank you so much for your welcome today. We all had a wonderful time and our clients left super happy... everything was perfect. Thank you very much for a lovely day!"

Marcelina Chavarri
Marketing and Events co-ordinator
LOEWE

CHEFFINS



TAYABALI & WHITE
ACCOUNTANCY | TAX | CONSULTING

PHILLIPS

LOEWE

OFFER WATERMAN

Ovidiu Maitec, *Radar II*, 1970 (detail), photograph, Paul Allitt



“Kettle’s Yard is a miraculous place, a bubble of humanity and enlightenment.”

Rowan Moore, The Observer

Kettle’s Yard
01223 748 100
mail@kettlesyard.cam.ac.uk
www.kettlesyard.cam.ac.uk

Instagram X @kettlesyard



Supported using public funding by
**ARTS COUNCIL
ENGLAND**

