

A Visual Story of

KETTLE'S YARD

There are two entrances to Kettle's Yard

This is Castle Street



This is Northampton Street

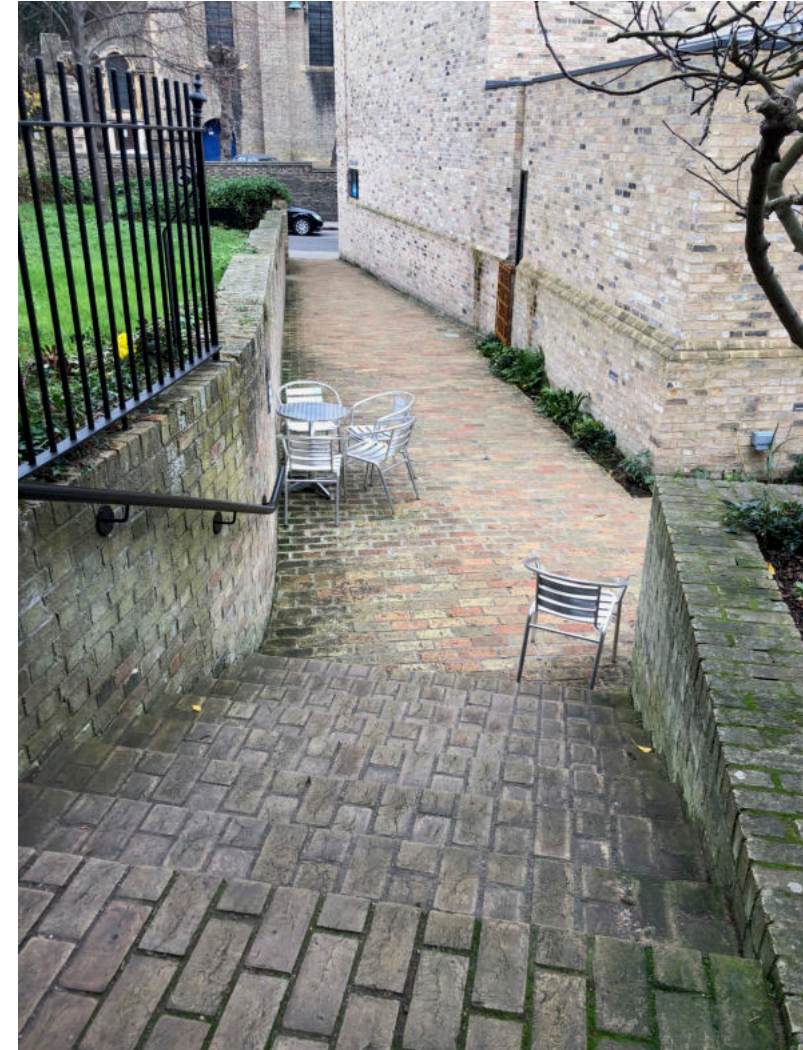


Sometimes the pavements and roads near Kettle's Yard can be quite busy

The Castle Street Entrance has no steps



The Northampton Street Entrance has some steps



This is the way in to Kettle's Yard

Sometimes people sit in the courtyard and have food and drink



This is the Welcome Area and Information Desk

It is sometimes busy and it can be loud



If you want to talk to a staff member you can queue up here



Bags and large coats are not allowed in the House

You can give them to our staff members at the information desk to collect later



All of our Staff wear green lanyards

KETTLE'S YARD

You can ask them for large print labels, tickets for the House or the Kettle's Yard Activity Book



This is our café

You can buy hot and cold food and drink to takeaway



It often smells like food and coffee

The café can be noisy. You might hear the coffee machine and other people talking



This is our shop

You can buy things here at the shop till

It is usually very bright and there are lots of colours



If you visit the house a Visitor Assistant will take you in with a small group of other people.

A Visitor Assistant will welcome you inside the House – you should give them your ticket



You will see lots of objects, furniture, paintings, sculptures and natural objects.



You can look at everything in the House

KETTLE'S YARD

Please don't touch any objects, art or furniture.



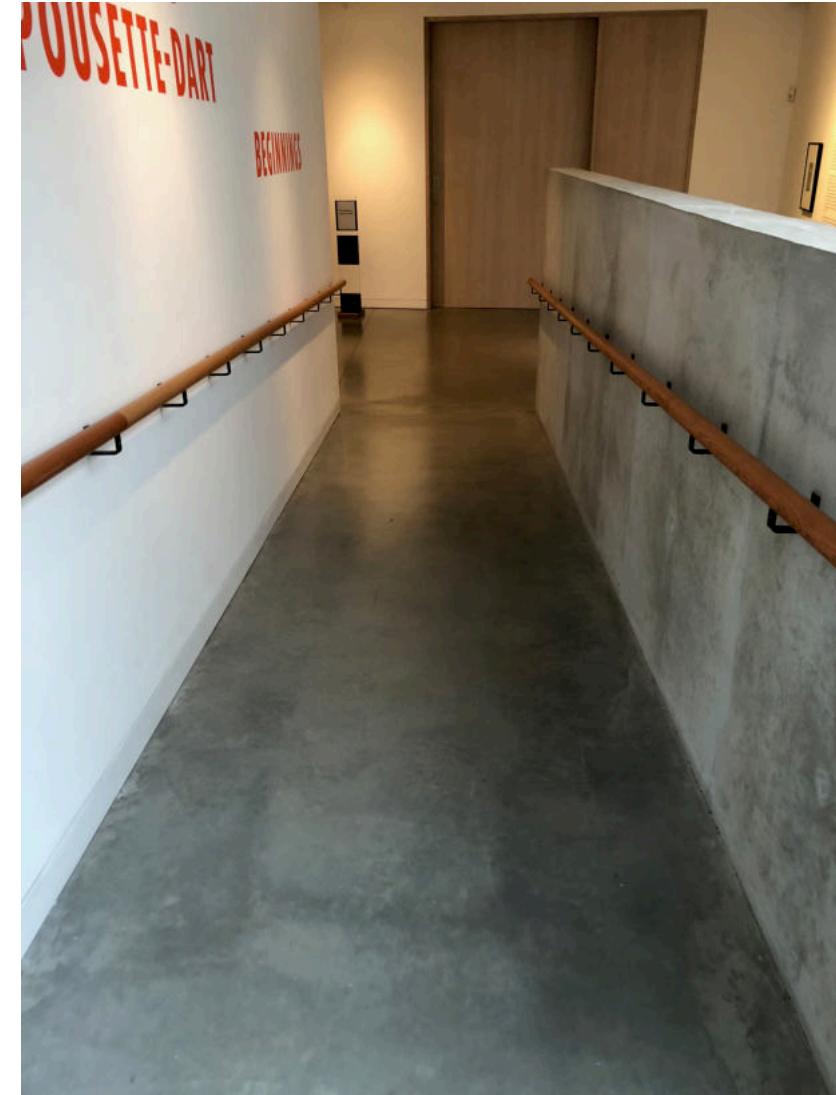
If you have any questions while you're in the House you can speak to someone in a green lanyard. They are happy to talk to you



You can view the Kettle's Yard House tour, which shows every room in the House, online here:

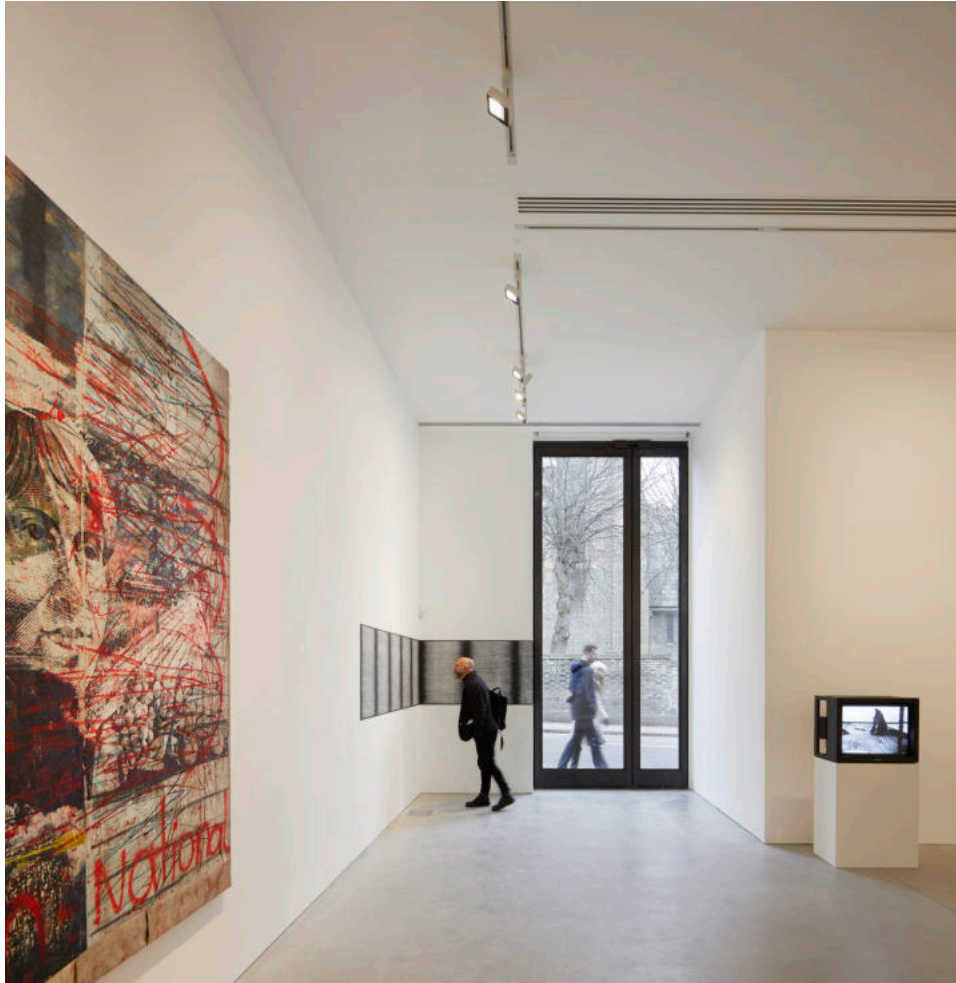
<http://tour.kettlesyard.co.uk/>

Behind the information desk are some stairs and a ramp
You can use the stairs or the ramp to visit the galleries



There are two big galleries
You can look at the art and talk about it

The galleries have different art in them every few months. Please call us
to find out what is in them now.



There are toilets on the ground floor, the second floor and downstairs in the Clore Learning Studio

You can use any toilet

There are automatic taps and paper towels to dry your hands



This is the Clore Learning Studio

Sometimes this is closed

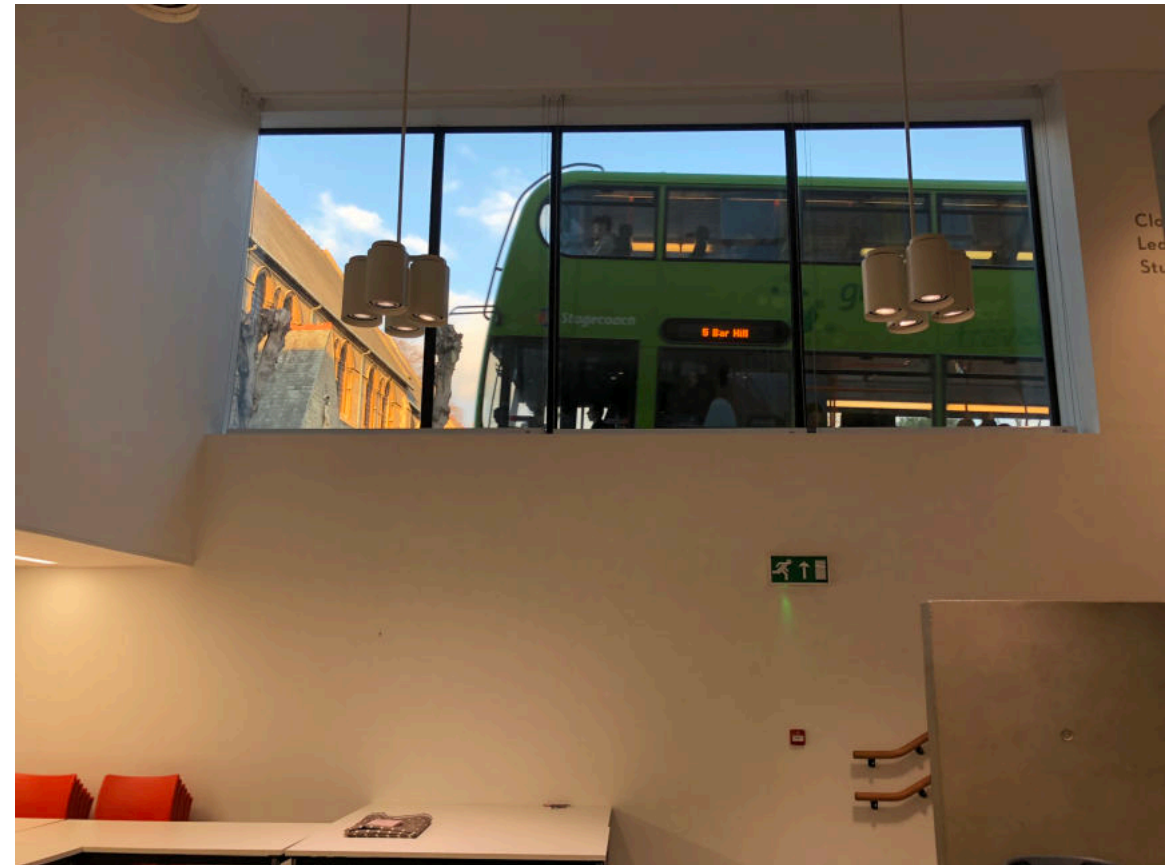
You can use the stairs or the lift to get here



Sometimes there are art activities here

It can be noisy and busy

You can see the road and traffic out of the big windows



There is an accessible toilet and a chair in here
The door opens inwards on a folding hinge



To go upstairs you can use the stairs or the lift

KETTLE'S YARD



This is our Research Space

This room looks different every few months

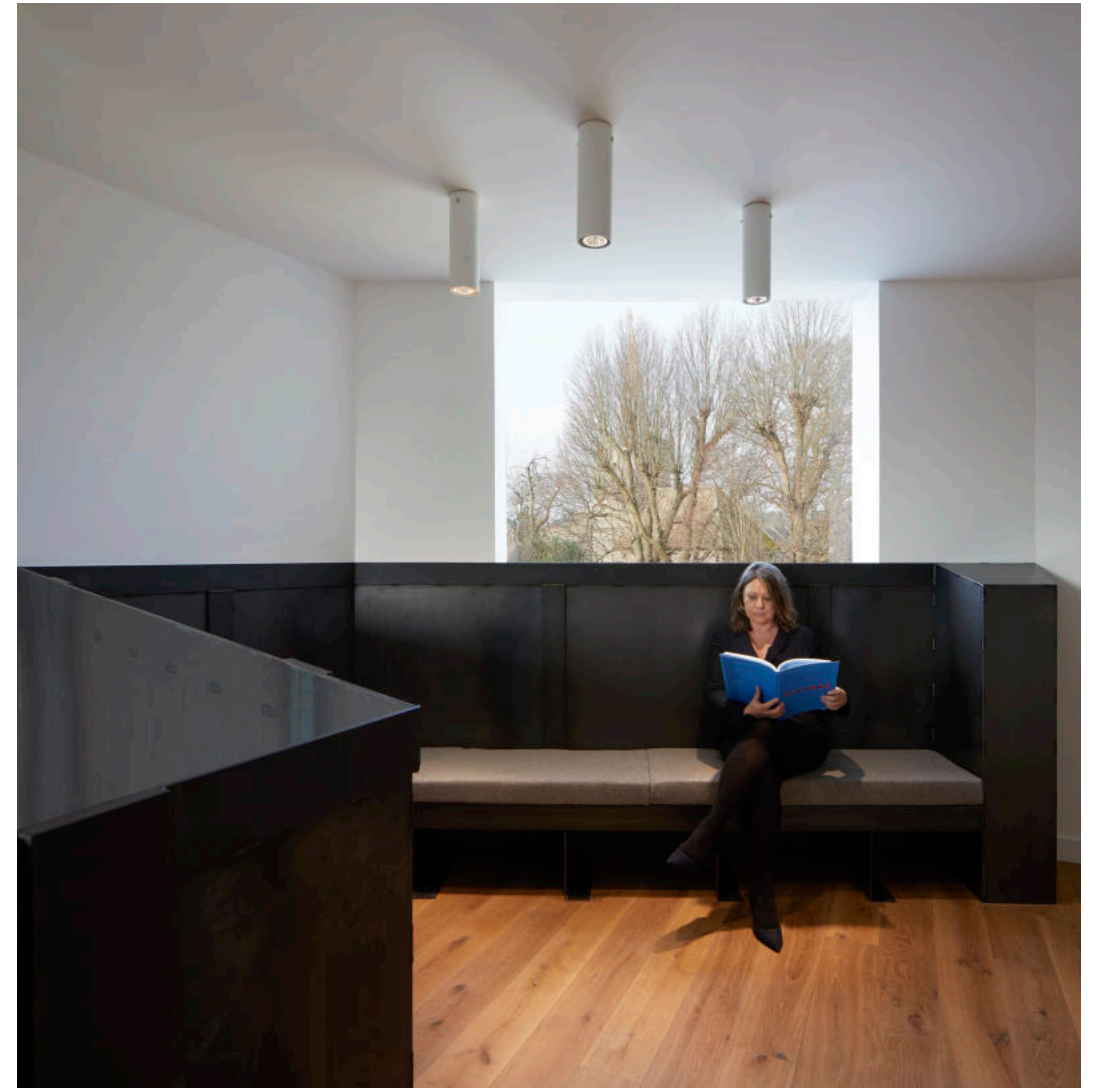
You can look at things and sometimes you can read books here



There is a bench on the second floor

You can sit here if you want to take
a break

Sometimes there are other people
here too



This is the Ede Room

KETTLE'S YARD

Sometimes this is closed. Sometimes there is a film to watch here.



You can tell us if you liked or
did not like your visit

You can leave from the same
door that you came in

We would like it if you came
back to see us again

