

*Annual Report*  
**KETTLE'S YARD**

19

20



UNIVERSITY OF CAMBRIDGE  
**MUSEUMS**  
& BOTANIC GARDEN



## Contents

4	Introduction from the Director
6	Mission, Purpose & Values
8	Exhibitions & Displays & Projects
24	Kettle's Yard at Home
26	Events Programme
28	Research & Publications
30	Collection & Archive
32	Music
34	Learning
40	Community
44	Attendance
46	Communications
54	Governance & Staffing
56	Commercial Activity
58	Development & Funding
64	Finances

# Introduction from the Director

As I write this in May 2021, the UK is coming out of a third national lockdown, while the global pandemic is far from over. The first half of 2019/20 seems another age, halcyon days before social distancing and so much else took over our lives and closed our arts buildings. Yet our programme at Kettle's Yard, before we closed in March, can inspire our future as we look ahead: outstanding art, new research, music concerts, talks and discussions, learning activities for children and projects with young people and with our local communities.

The exhibition programme continued to present outstanding art, both local and international. *Homelands: Art from Bangladesh, India and Pakistan*, curated by Devika Singh, brought new voices to the UK. Here was art, specific to places and histories, yet telling powerful stories of relevance to our communities in Cambridge and to wider audiences. As I wrote in the catalogue; 'this is an exhibition which is not possible to neatly contain within the walls of a gallery: the ideas are too fluid, the context too engaged with the here and now. The exhibition addresses issues of displacement and identity that define contemporary lives for millions of people across the planet, not only within South Asia.' One of the artists, Desmond Lazaro, spent time meeting families in Cambridge and hearing their migration stories. New paintings inspired by his meetings were the first art works encountered by visitors to the gallery.

'Linderism', a survey of the remarkable work of British artist Linder Sterling, opened in mid February 2020, closing abruptly on 15 March. I am delighted we were able to reopen the exhibition from August to October and seek to give those unable to visit, a strong sense on our website of both the experience of the exhibition and the significance of Linder's work within current debates around gender, identity and expression. From April 2020, Kettle's Yard went on line offering both curated selections from our digital archive and new content, including 'Reflections' and 'Three Questions', created with artists. At the same time, we worked collaboratively to deliver 1095 art packs to families across Cambridge. Throughout the closures we have sought to be dynamic and active in enabling art to continue to inspire and enrich daily lives.

In July 2020, following the murder of George Floyd, we set out our institutional commitment to anti-racism action. We recognised, alongside the cultural sector across the UK, the urgent need to embed race equality and diversity into all our policies and plans. We will report on our progress each year.

This Report reflects an extraordinary period in which we can be proud that creativity has continued to flourish at Kettle's Yard. This has only been possible because of the commitment and resilience of our staff in the most challenging of circumstances. My sincere thanks to every one of them, and to all our funders and loyal patrons, donors and friends. Your support makes everything happen and will be ever more vital as we open our doors and welcome visitors once again.

Andrew Nairne OBE, Director





## Mission, Purpose & Values

### Mission

To contribute to society by inspiring and engaging audiences through art, learning and research of the highest quality. We believe that great art should not be the privilege of the few, but for everyone. Our values reflect Kettle's Yard's creator Jim Ede's support for artists and belief in art's power to make us look again and change how we act in the world.

### Purpose

- Conserving the House, collections and archive for present and future generations and as a resource for research.
- Presenting exhibitions of modern and contemporary art and concerts of classical and contemporary music.
- Welcoming and engaging diverse audiences through innovative learning programmes and public engagement
- Ensuring financial sustainability through governance and management, core funding, partnerships, earned income and the support of donors, trusts and foundations

### Values

#### ART OF OUR TIME (Creativity)

- Supporting and presenting the best art of today, reflecting the diversity of contemporary practice and contemporary society

#### A COLLECTION IN ACTION (Inspiration)

- Inspiring new art and ideas
- Connecting the House and Collection with contemporary lives
- Engaging children, young people and communities
- Using new technology to deepen experience and learning

#### OPEN HOUSE (Equality)

- Promoting equality of access and participation for all
- Supporting collaborative practice and co-production

#### CONSTANT ENQUIRY (Curiosity)

- Stimulating artists, and visitors of all ages, to be curious and look again
- Contributing to, and enabling artists and visitors to access the research and excellence of the University of Cambridge

#### LOOKING AHEAD (Vision)

- Being ambitious and forging change
- Taking risks
- Ensuring environmental and financial sustainability

# Exhibitions

**The Cambridge Show**  
3 - 27 October 2019

**Homelands: Art from Bangladesh, India and Pakistan**  
12 November 2019 - 2 February 2020  
[Listen to a panel discussion](#)

**Linderism**  
15 February - 11 October 2020  
[Watch a guided exhibition tour](#)

Homelands: Art from Bangladesh, India and Pakistan, 2019. Photo: Stephen White



The Cambridge Show, 2019. Photo: Stephen White

# Displays & Projects

**Ian Giles: Outhouse**  
Ede Room  
8 - 20 October 2019

**Jim Ede and India**  
Edlis Neeson Research Space & Kettle's Yard House  
12 November 2019 – 2 February 2020  
[Watch a short film](#)

**Open House**  
Edlis Neeson Research Space Display  
12 November 2019 – 2 February 2020  
[Watch a short film](#)

**Carol Rhodes: Paintings**  
Kettle's Yard House  
12 November 2019 – 2 February 2020



Jim Ede and India, 2019/20. Photo: Stephen White

**TOAST: Re-New**  
Edlis Neeson Research Space Display  
30 October – 3 November 2019

**Meeting Ground**  
Nuns Way Recreation Ground,  
Cambridge, CB4 2PF  
16 February - 1 March 2020



Open House, 2019. Photo: Stephen White



Carol Rhodes: Paintings, 2019. Photo: Stephen White

**The Cambridge Show  
3 - 27 October 2019**

*'It was Cambridge but so  
NOT Cambridge in all the  
best ways.'*

- Visitor, October 2019

*'Reflecting on the range of  
provocations, beauty,  
experience across 22 artists  
@kettlesyard'*

- Twitter, October 2019

*'Showcasing a cross-section of  
diverse styles from  
photography to performance  
- and diverse themes from the  
political to the whimsical -  
the 22 artists for the  
Cambridge Show made the  
final cut from 460 starts'*

- The Cambridge Independent, September  
2019

*'Had such a fun evening at  
The Cambridge Show  
opening. What a wonderful  
exhibition celebrating some  
amazing & talented local  
artists!'*

- Twitter, October 2019



**Jonny Aldous, Rinchen Ato, Alexandra Baraitser, Eleanor Breeze, Anna Brownsted, Fiona Curran, Semilore Delano, Rosanna Greaves, Claerwen James, Paul Kindersley, Alexander Massouras, Laura McPherson, Idit Nathan, Harold Offeh, Sasha Pirogova, Luciana Rosado, Emma Smith, Renée Spierdijk, Helen Stratford, Caroline Wendling, Sarah Wood, Wei Yuan**

This exhibition brought together work by twenty-two artists who are based in and around Cambridge. From photography to performance, the exhibition explored these artists' diverse practices, and some of the themes and issues that they were engaging with at the time.

The artists were selected from an open-call to which 460 artists put forward work. The selection panel was chaired by Andrew Nairne, Director of Kettle's Yard, and included Amy Botfield, Arts Council England; Guy Haywood, Curator, Exhibitions and Collection, Kettle's Yard; Sabine Jaccaud, AstraZeneca; Issam Kourbaj, artist; and Harriet Loffler, Curator, New Hall Art Collection, Murray Edwards College.

A vibrant programme of events, performances and talks accompanied the exhibition.

*The Cambridge Show* was generously supported by AstraZeneca.

**Homelands: Art from Bangladesh,  
India and Pakistan  
12 November 2019 – 2 February 2020**

*'...The main challenge of organizing such an exhibition is finding a way to convey the political and cultural context of the artworks, while also allowing them to speak for themselves. In this elegantly curated show the balance feels exactly right.'*

– Hyperallergic, November 2019

*'Curation in Homelands was excellent in the way it showcased the facts and the reality of the situation - stunned as this is so unusual.'*

– Visitor, November 2019

**'Some really varied and thought provoking work, that definitely warrants another visit!'**

– Twitter, November 2019







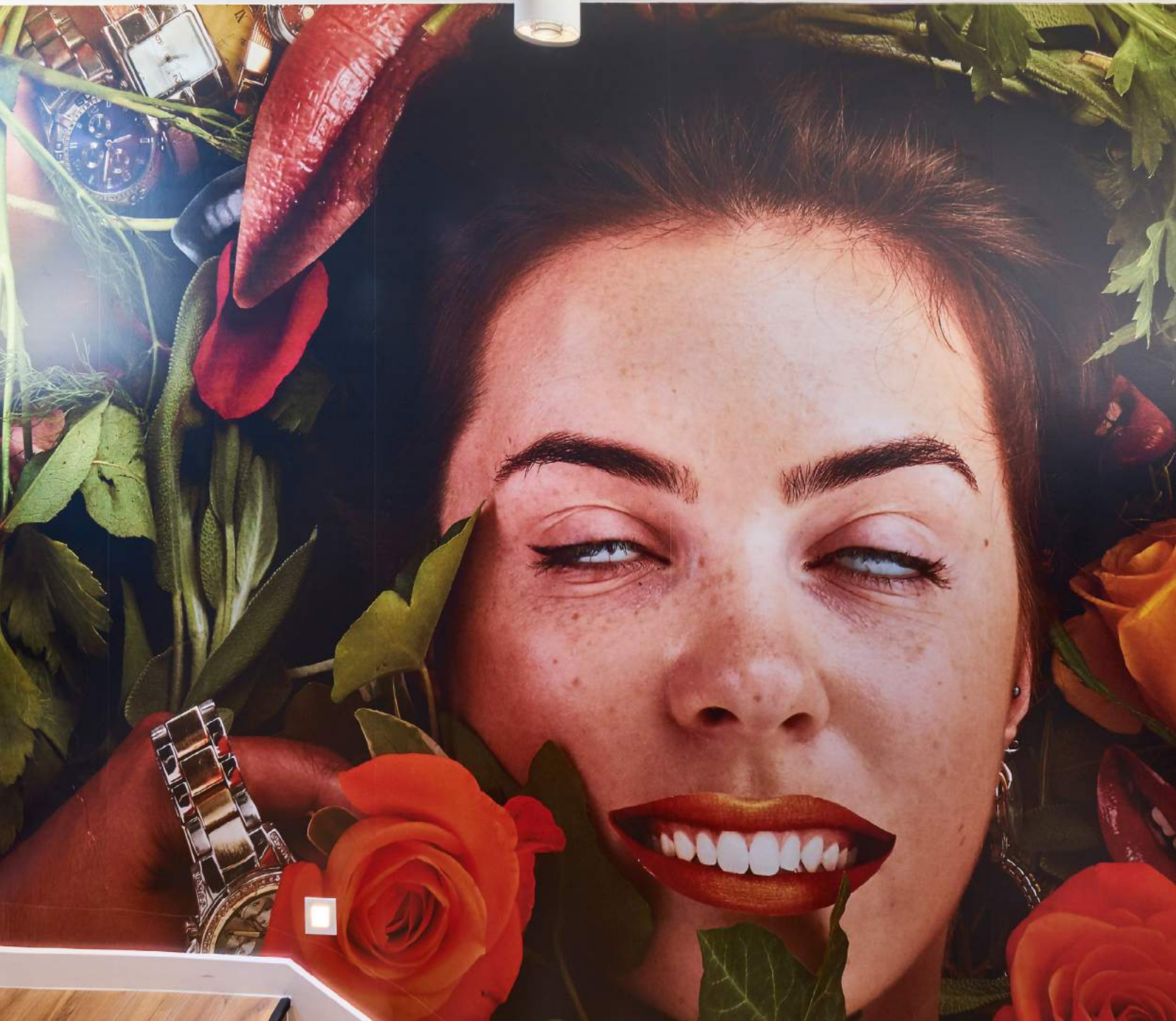
**Bani Abidi, Nikhil Chopra, Iftikhar Dadi & Elizabeth Dadi, Shilpa Gupta, Sohrab Hura, Desmond Lazaro, Yasmin Jahan Nupur, Seher Shah, Munem Wasif and Zarina.**

Through photography, sculpture, painting, performance, and film, *Homelands* told stories of migration and resettlement as well as violent division and unexpected connections. The exhibition explored the instability of home, citizenship and nationality in a region marked by colonialism and its repercussions – including the Partition of India and Pakistan in 1947, and the independence of Bangladesh in 1971, as well as contemporary migration across South Asia. The artists engaged with intimate, political, and environmental histories, often contesting borders, finding common pasts and imagining new futures.

The exhibition included many works being shown in the UK for the first time, a commission by Desmond Lazaro working with communities in North Cambridge and a performance by Nikhil Chopra. There was a symposium which explored themes of the exhibition on 18 January.

Curated by Devika Singh with Amy Tobin and Grace Storey.

**Linderism**  
**15 February – 11 October 2020**



*'The artist has quietly and stealthily commandeered Kettle's Yard in a multi-sensory takeover...'*

– Wallpaper\*, February 2020

*'The catalogue for this survey at Kettle's Yard is one of the best we've received all year. I'm disappointed to miss the show in the flesh.'*

– Frieze, March 2020

*'Beautifully subversive show at Kettle's Yard of Linder Sterling works.'*

– Instagram, October 2020

*'The #Linderism exhibition at Kettle's Yard has something for everyone...'*

– Instagram, March 2020

## Linder Sterling

Most well known for her photomontage, this exhibition explored the diverse range of Linder's practice. It explored Linder as performance artist, zine-maker, musician, documentary-photographer, collaborator, muse, guru, medium and body-builder.

Through the use of the Kettle's Yard Archive, Linder also approached Helen Ede's elusive presence in Kettle's Yard. Linder reinstated Helen through the creation of 'House of Helen', a brand of products available in the shop. A series of new commissions engaged the five senses and saw Linder staging interventions in all areas of Kettle's Yard including the House and the Edlis Neeson Research Space.

Linder was born in Liverpool in 1954 and was an active figure in the punk and post-punk music scenes. Probably best known for the album covers which she created, her photomontages often combine everyday images taken from fashion or home magazines with images from pornography.

The exhibition was produced in association with Newcastle University's Hatton Gallery.



# Displays & Projects

Carol Rhodes: Paintings, 2019. Photo: Stephen White



**'Carol Rhodes paintings are awe inspiring. Thank you.'**

- Visitor, November 2019

*A small number of paintings by Carol Rhodes, who died in 2018, were especially selected to hang among, and in juxtaposition to, artworks in the Kettle's Yard House. Rhodes, who was brought up in India but lived her adult life in Glasgow, is renowned for her beautifully realised aerial views of fictional landscapes*

*As part of their Open House residency, artists in residence Wright & Vandame transformed Nuns Way Pavilion into 'Meeting Ground' - a space in North Cambridge that hosted different activities and artworks over a two week period in February 2020.*



Meeting Ground, 2020. Photo: My Linh Le

*'Jim Ede and India' was a new display showcasing research exploring the time Jim Ede spent in South Asia, and the impact it had on him. A number of works that related to South Asia were shown in the Kettle's Yard House as part of this display.*



Jim Ede and India, 2019. Photo: Stephen White

*'Outhouse' is a mobile queer space traveling across East Anglia. The transparent walls of the cylindrical structure feature photographs and ephemera related to historic and contemporary LGBTQI+ culture from the East of England.*



Ian Giles, Outhouse, 2019. Photo: Stephen White

◀ [Read a blog post on 'Meeting Ground' here](#)

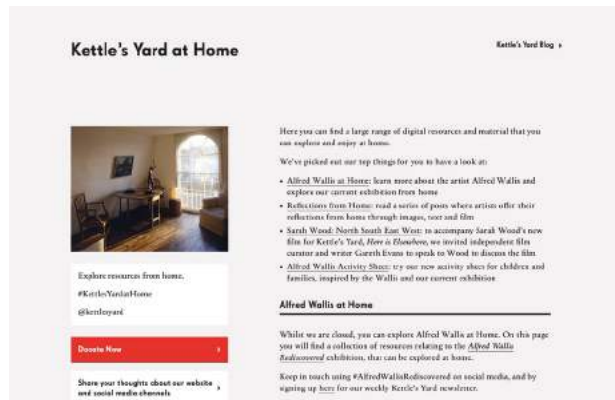
# Kettle's Yard at Home

'Kettle's Yard at Home' was created as a way of sharing content from Kettle's Yard online during the pandemic. This webpage hosted films about collection artists and artworks, a webcam streaming live from the House, downloadable family activity sheets, virtual tours, new exhibition content and more. Between March - July 2020 the 'Kettle's Yard at Home' webpage had 3,130 unique page views.

As part of 'Kettle's Yard at Home' we launched two new artist series, 'Reflections from Home' and 'Three Questions' and a research series 'Tangier Days'. The combined number of unique page views for these three series over the period was 10,733.

We created a 'Linderism at Home' page to share online content for the *Linderism* exhibition. This page gained 692 views between March - July 2020.

[Visit 'Linderism at Home' here](#)



Kettle's Yard at Home webpage



Kettle's Yard Webcam

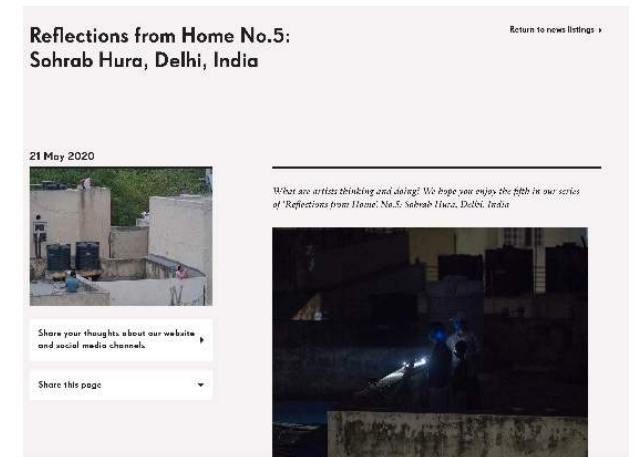


Christopher Wood's 'Flowers' (1930) film

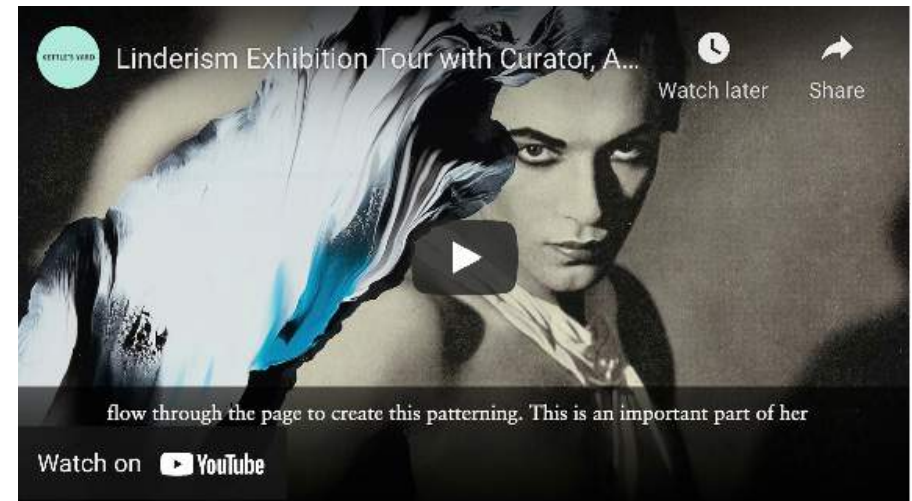
[Watch a film about Christopher Wood's 'Flowers'](#)

[Watch a film about Barbara Hepworth's 'Three Personages'](#)

*'What a wonderful idea! I love this, seeing into the artist's mind...'*  
 – Reflections from Home, April 2020



Reflections from Home No.5; Sohrab Hura



Linderism exhibition tour, Linderism at Home

# Events Programme

From August 2019 to March 2020 we organised 64 in person events as part of our public programme including exhibition tours, live performances, talks, concerts and symposiums, reaching a total of 4546 people. Following closure, we moved many events online.

**'Linder and the musicians performed in dark surgical masks, and Linder turned her opening song into the most transgressive sound of the present moment, the cough.'**

- Linder, *Bower of Bliss: An Improper Architecture* at Murray Edwards College, 14 March 2020, Carol Atack, [Anachronism and Antiquity](#), 2020

**'Watched the extraordinary performance painter Nikhil Chopra as he drew a red lipstick English landscape. The conversation with Tate Curator Catherine Woods was excellent and the atmosphere was the friendliest I have ever experienced, among an artistic community of Indians, Pakistanis and Bangladeshis.'**

- Nikhil Chopra's *Rouge* Performance at Kettle's Yard, 3 December 2019, Feedback, 2019



Nikhil Chopra, *Rouge*, performance, 2019, Photo: Neena Percy

[Watch 'The Bower of Bliss: An Improper Architecture' at Murray Edwards College here](#)

*On 14 March 2020 Linder staged a new performance, with a soundtrack by musician Maxwell Sterling, at Murray Edwards College, Cambridge, the home of the New Hall Art Collection.*



Linder, *Bower of Bliss: An Improper Architecture* at Murray Edwards College, 14 March 2020. Photo: My Limh Le

# Research & Publications

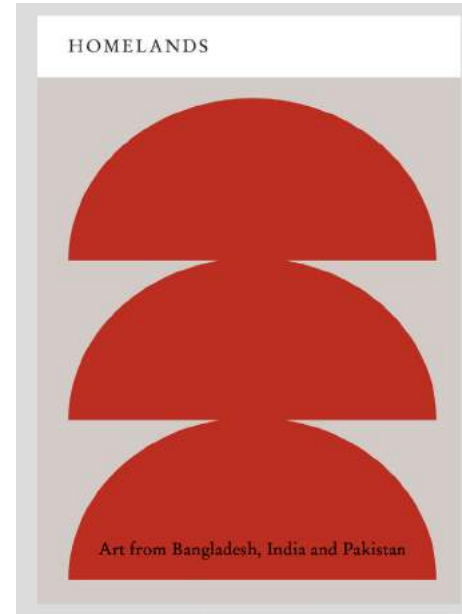
## Research and Dissemination

Amy Tobin contributed to publications including *Erotic Abstraction: Hesse and Wilke* (Acquavella and Rizzoli, 2020), as well as four reviews for *Burlington Contemporary* and *Burlington Magazine*. She delivered talks and lectures at ARTIUM, Vitoria-Gasteiz, Spain; University of Leicester; Art Licks Weekend; Buxton Contemporary, University of Melbourne, Australia and The Women's Art Library, Goldsmiths, London.

Alina Khakoo curated the display *Jim Ede & India* in the Edlis Neeson Research Space (November 2019 – February 2020), as well as a printed guide to South Asian objects in the Kettle's Yard House. Drawing on new research, and showcasing material from Kettle's Yard and other archives, the display explored Jim Ede's travels in British India in 1917-18, and its lasting influence on Ede and Kettle's Yard.

Andrew Nairne and Eliza Spindel created *Tangier Days*, a six-part online series exploring the Edes' time spent living in Tangier from 1936 to 1952. The series centred on previously unpublished photographs and extracts from Jim Ede's written 'Tangier log'. This was accompanied by insights into the legacies of Tangier at Kettle's Yard, and research into finding Whitestone, the Edes' modernist house.

Amy Tobin and Eliza Spindel were each awarded funding from the Jonathan Ruffer Curatorial Grant for research trips to Australia and to Palestine and Jordan respectively (the latter postponed due to the pandemic).



## Homelands: Art from Bangladesh, India and Pakistan

Produced to accompany the exhibition, with contributions from Nancy Adajania, Homi K. Bhabha, as well as each of the exhibition artists: Bani Abidi, Nikhil Chopra, Iftikhar Dadi & Elizabeth Dadi, Shilpa Gupta, Sohrab Hura, Desmond Lazaro, Yasmin Jahan Nupur, Seher Shah, Munem Wasif, and Zarina. Edited by Devika Singh and Amy Tobin.

# LINDERISM

## Linderism

Published to coincide with *Linderism*, the first in-depth survey of Linder's work in the UK. With essays by James Boaden, Alyce Mahon, Amy Tobin and Sarah Victoria Turner, as well as extensive documentation of the artist's research images and working drawings. Edited by Amy Tobin with Alina Khakoo, and published with Koenig Books.



Jim Ede and India, Edlis Neeson Research Space Display, 20219. Photo: Stephen White

# Collection & Archive

## Archive

The archive received 32 visits from researchers, across 24 research days (until closure on 17 March 2020). Topics of research included David Jones, Barbara Hepworth, Walter Hoyle, Henri Gaudier-Brzeska's *Toy*, Helen Frankenthaler's *Abstract*, and the biography of Jim Ede. A number of artists also carried out archival research to inform new works, such as Caroline Wendling's performance, *Habit[Ing]*, commissioned as part of *The Cambridge Show*.

Projects and displays such as *Jim Ede & India* and *Tangier Days* also drew heavily on the archive, finding new and unexplored ways of understanding Kettle's Yard and its history.

For International Women's Day 2020, and inspired by Linder's focus on the figure of Helen Ede, we organised a talk and archive showcase titled *Who Was Helen Ede?*, with contributions from the Edes' granddaughter, Jane Adams.

## Collection Conservation

Following reopening in 2018, conservation has largely focused on the furniture and furnishings that undergo daily use by visitors.

## Loans

Works from the Kettle's Yard collection continued to feature in exhibitions across the UK and internationally. In 2019-20, we loaned works to exhibitions including *St Ives: Movements in Art & Life* at the Royal West of England Academy, *Mary Newcomb: Nature's Canvas* at Compton Verney and *Brancusi: Sublimation of Form* at BOZAR, Brussels.

## Recent acquisitions

We are grateful to have received the following generous donations, which have been added to the permanent collection for future generations to enjoy:

Lucie Rie, *Bowl*, c. 1960. Stoneware.  
Gift of Susan Strasser, 2019

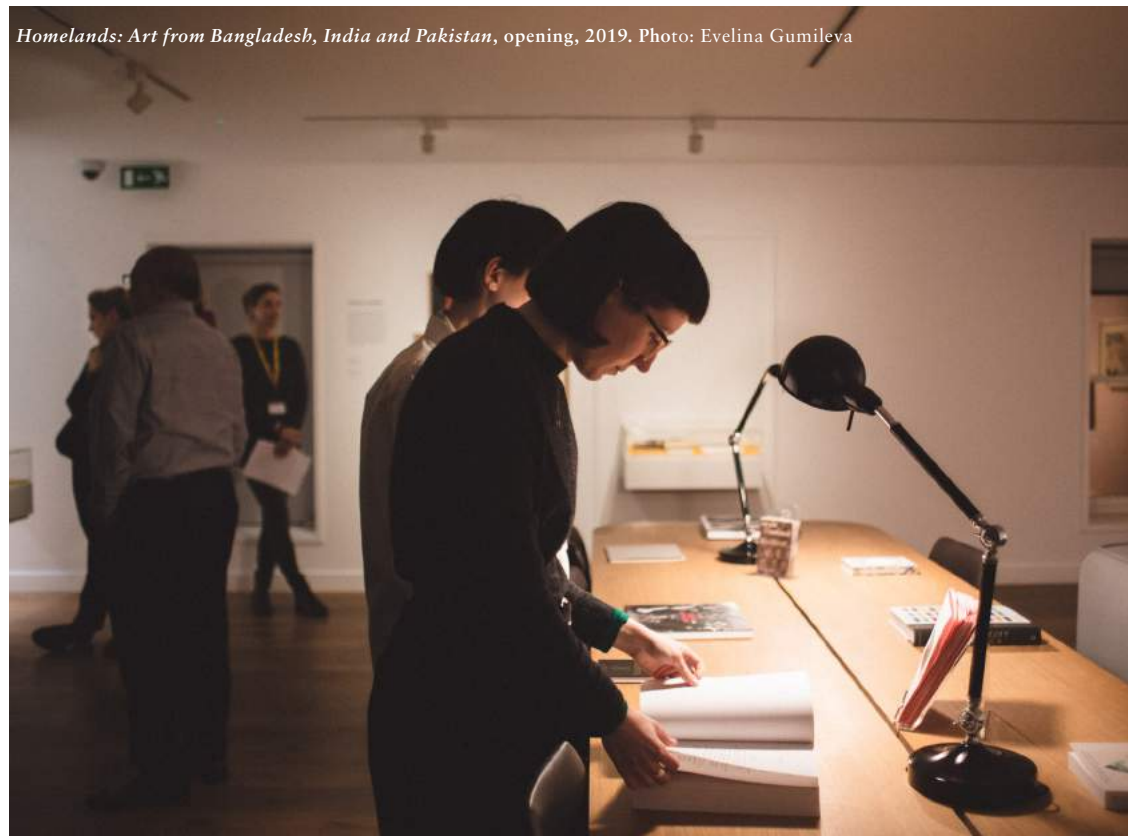
Hans Coper, *Sack Form with Disc*, c. 1970. Stoneware.  
Gift of Dorothy Sturley in memory of Dr Ron Gray, 2020

Naum Gabo, *Opus Three*, 1950. Wood engraving (monoprint) on paper.  
Accepted under the Cultural Gifts Scheme by HM Government from Nina Williams and allocated to Kettle's Yard, 2020

 [Read the 'Tangier Days' series here](#)



Books at Kettle's Yard, photo: Josh Murfitt



*Homelands: Art from Bangladesh, India and Pakistan*, opening, 2019. Photo: Evelina Gumileva



# Music

In 2019/2020 Kettle's Yard held nineteen concerts comprising Chamber Music, New Music and Student Music before the COVID-19 pandemic, with a total audience of over 1,600 people. From March - July 2020 music was showcased online through playlists and short films.

## Chamber Music

Chamber Music Programmer Justin Lee programmed fifteen Chamber Music concerts from October 2019. The season began with the Van Kuijk Quartet and other concerts included performances by the Maxwell Quartet, soprano Carola Darwin, celloist Jamal Aliyev and more. During closure, an online music playlist was created to showcase music from the four Chamber Music concerts which were cancelled due to the closure. The playlist had a total of 207 unique page views between March - July 2020.

## New Music

Five New Music concerts were programmed by New Music Curator Tom McKinney in the period, two of which were able to take place. The first concert was with Aisha Orazbayeva on violin and Mark Knoop on piano, and the second was with the Solem Quartet. During closure, the musicians from the last three concerts shared music on the Kettle's Yard website with short film introductions from Tom McKinney and webpages with collected content. The total unique views for these pages was 623.

## Student Music

In the spring term six lunchtime student concerts took place, programmed by Naomi Warburton, Student Programmer for 2020. These ranged from Leo Appel and Friends playing Sephardic music to acapella singing from Cadenza.

We are grateful to Dr Shirley Ellis for her continued support of the music programme at Kettle's Yard.

*'The dreamiest of evenings with the @solemquartet combining all my favourite things; contemporary music, art and chamber music in the perfectly scaled jewel box of @kettlesyard. Thank you @tommckinney for curating such a beautiful programme.'* - Twitter, March 2020



# Learning

The learning team ran a busy programme of activities for all ages until mid-March 2020, when it switched to creating alternative online provision.

## School Visits

We welcomed formal learning groups of all ages, from Year 1 students on their first school trip to higher education groups from a range of disciplines. Between August 2019 – March 2020, we ran 59 sessions, with 1300 students and 216 teachers taking part.

**'All the students had an absolutely wonderful time - I think every student (and all my staff!) gained a lot from the day. In general, my students don't get many opportunities to access galleries and cultural spaces, so it's incredibly powerful for them to be welcomed and accomodated so comprehensively in a place like Kettle's Yard.'** – Castle School visit, 2020



We Are Cambridge, 2020, photo: Damaris Athene



Twilight 2020, photo: My Linh Le

# Public Programme

## Studio Sunday and Early Years Studio

A highlight of our public programme was the ever-popular Studio Sunday, offering free, artist-led family activities inspired by our collection and exhibitions. Between August 2019 – March 2020, we ran 12 Studio Sundays with 992 people taking part.

We continued our monthly Early Years Studios, an open, playful space supporting multi-sensory exploration with under-4s. Before closure, we ran 7 sessions with 301 participants.



Studio Sunday, 2020



Early Years Studio, 2020

## We Are Cambridge

As part of *The Cambridge Show* exhibition, we hosted a family welcome day called We Are Cambridge. This saw the building full of artists leading drop-in activities for families, inspired by the creativity of artists, families and individuals all across Cambridge.

## Twilight

2020 saw another successful Twilight, our annual after-dark event for families, produced in partnership with museums across Cambridge. The event took inspiration from Linder's celebration of all of the senses by offering an activity for each sense. These ranged from making your own Jim Ede-inspired Pot Pourri to creating a candle and building a clay sculpture, and finished with a glass of lemon cordial as a reward for completing them all.

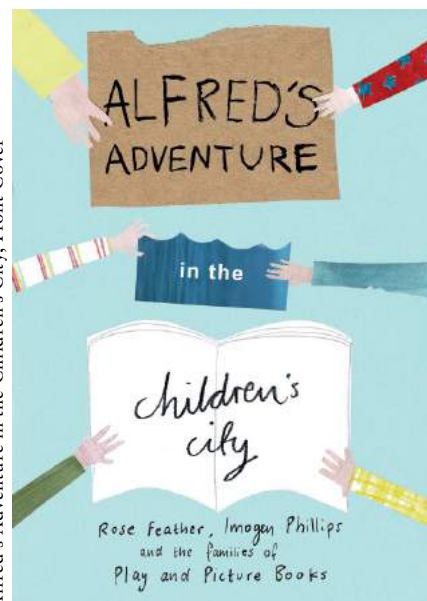
**280 participants**

## Families

In the first lockdown of 2020, we created a number of ways of staying connected and creative with at-home family activities. In May, we launched our online Pebble Challenge - a series of art challenges to explore artworks, objects and ideas from Kettle's Yard using simple materials. We also shared 1095 free printed copies and art materials with families across Cambridge through our partnerships with Centre 33, The Red Hen Project, Arbury Primary School and the City Council, NCCP and the Church of the Good Shepherd.

In July 2020, we created three films introducing Kettle's Yard-inspired activities to local families through the City Council's ChYpPs provision for children and young people, reaching 79 families.

*"This is an amazing project!  
Well done to the teams behind  
it."* - Instagram comment on Play and Picture  
Books, 2020



## Play and Picture Books

Play and Picture Books was a partnership between Kettle's Yard, the Red Hen Project and the County Council's early years literacy programme, Talking Together in Cambridgeshire. In Spring 2020, 13 families from North Cambridge met each week to discover artworks by the painter Alfred Wallis through stories, art-making and songs. Together, the families built confidence exploring books and paintings by letting children take the lead in multi-sensory play and story-telling.

The families developed a children's book together with illustrator Rose Feather, telling the story of their adventures. This book, *Alfred's Adventure in the Children's City*, is now published and available in the Kettle's Yard shop.

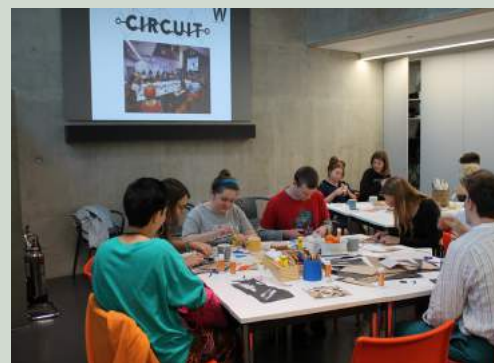
## Circuit

Circuit, Kettle's Yard's young people's group, began the year with a summer school in partnership with Turtle Dove, a social enterprise in Cambridge founded to improve the future of young women who are, or are at risk of becoming, unemployed. Delivered by members and graduates of the Circuit programme, the summer school offered a week of creative activities at Kettle's Yard. Through animation workshops led by Circuit graduate Beeny Harwood Purkiss, the participants contributed to the production of an animation now used by Turtle Dove to welcome young women to their team.

## 23 participations

Circuit then worked with Linder and Maxwell Sterling to create a number of events and responses to the Linder exhibition. This included a debate, music compositions and art workshops. When Kettle's Yard closed in March 2020, the group moved to meeting weekly online, and tested out a number of virtual tools for their meetings and public events, including online whiteboards, music editing platforms and Instagram Livestreams.

## 41 Circuit sessions 392 participants



Circuit workshops, 2019-2020



*"I think it's mad that Circuit exists. That  
there are so many cool things to do, and that  
it's totally free! Really amazing."*

- Circuit member, December 2019



The Pebble Challenge

**Pebble Challenge** KETTLE'S YARD

**get creative at home!**

Explore artworks, objects and ideas from the Kettle's Yard collection to create your own art. Each pebble marks an activity to make and do at home, using the things you find around your house. If you can, check online for more info and inspiration and cross off the pebbles as you go.

kettlesyard.co.uk/pebblechallenge  
Share your creations:  
#pebblechallenge @kettlesyard  
or email us with feedback  
learning@kettlesyard.com.ac.uk

'Kettle's Yard #PebbleChallenge is a really lovely project - artworks from @kettlesyard being used to explore creative activities using everyday things, see how colour, positioning, light can affect mood and instil calm.' – Twitter, May 2020

[Click here to download the Pebble Challenge](#)



Lemon Zest workshop, 2019



Twilight 2020, photo: My Linh Le



Clay workshop as part of Twilight 2020, photo: My Linh Le

"Drawing workshop @kettlesyard this morning - 3 hours sketching, colouring and shading in my favourite place and the time flew past in a flash. Highly recommended."

– Drawing workshop participant, Twitter, February 2020

# Community

## Open House

Open House: Evolving City is a long-term creative collaboration between Kettle's Yard and our neighbouring communities in North Cambridge, supported by Esmée Fairbairn Foundation. Artists collective, Wright & Vandame, were Open House artists in residence for 2019/20. They collaborated with local participants to explore how physical space relates to our wellbeing.

Wright & Vandame worked with three local groups in North Cambridge to create a meditative audio and visual artwork, Sky Film, and to co-curate a display of works from the Kettle's Yard Reserve Collection. Artist Facilitators worked with further community groups, responding to Wright & Vandame's residency, creating artworks, objects and resources, which were installed as part of the residency outcome *Meeting Ground*.

*Meeting Ground* was a two-week programme of events, exhibitions and workshops which took place in a transformed community space, Nuns Way Pavilion. The pavilion was reimagined with a colour palette inspired by Bryan Pearce's work, *Coal Boat*, 1965, and filled with artworks created by the community, beautiful plants and inspiring objects. *Meeting Ground* welcomed over 1000 participants who took part in a range of introductory experiences that shared ways to take care of physical, mental and social wellbeing.

**'It's so lovely having a room full of women working together, chatting together, helping each other. Look what we can achieve together as women!' - Feedback from Corona House**

participant



Meeting Ground, photo: My Linh Le



Children from the Grove Primary School

*'I am very excited that Enni-Kukka will be working with us all in North Cambridge. At challenging times, like the one we are currently experiencing, empathy in our community is more important than ever'*

- Alan Soer, Manager of Arbury Community Centre

## Arbury Court Christmas Tree 2019

Kettle's Yard was invited by North Cambridge Community Partnership to support the decoration of Arbury Court's Christmas tree. Artists Anu Ann Templar and Kaitlin Ferguson collaborated with children from Arbury Primary and families at Arbury Court Library to create a 'green' Christmas tree using sustainable decorations that had been created using upcycled and natural materials.

## Arbury Carnival 2020

To mark their return to school after the first lockdown, and National Empathy Day, pupils at the Grove Primary School in Kings Hedges worked remotely for a week with artist Enni-Kukka Tuomala to explore empathy in their reconfigured school settings. One special element of the project was recorded messages from the children to give encouragement to their local community. The messages included support for local residents, personal thanks to neighbours, and also a group thank you to the NHS. These messages were shared from a loud speaker from a specially adapted bike which travelled to mark what would have been Arbury Carnival. *The Campaign for Empathy: A Message* is a travelling audio artwork spreading messages of hope, joy, togetherness and empathy from the future generation, in their own voices and their own words.



Arbury Carnival, photo: My Linh Le

Empathy Windows, photo: My Linh Le

*'I would normally be manning my stall at Arbury Carnival. It's so lovely to hear these messages and to bring a smile to our faces.'* - Feedback to *Campaign for Empathy: A Message*, 2020

## Desmond Lazaro 2019

Artist Desmond Lazaro spent a week in Spring 2019 getting to know our local community as part of a new commission created for the exhibition, *Homelands: Art from Bangladesh, India and Pakistan*. People were invited to share their stories of how they and their family had come to be living in Cambridge and introduce any significant objects to Lazaro which related to this. During the week Lazaro met with people who had migrated from countries across the globe including Bangladesh, Chile, Hungary, the United States and India. All those who collaborated with Lazaro were invited to reconnect with the artist and see the resulting artwork for the opening of the exhibition in Autumn 2019. As part of the programme, we were also delighted to host a special screening of *Hora Chilena: Chilean Time*, a film created by one of Lazaro's collaborators, Camila Iturra, documenting Chilean migration to Cambridge followed by a discussion about the making of the film.



Homelands: Art from Bangladesh, India and Pakistan, photo: Stephen White

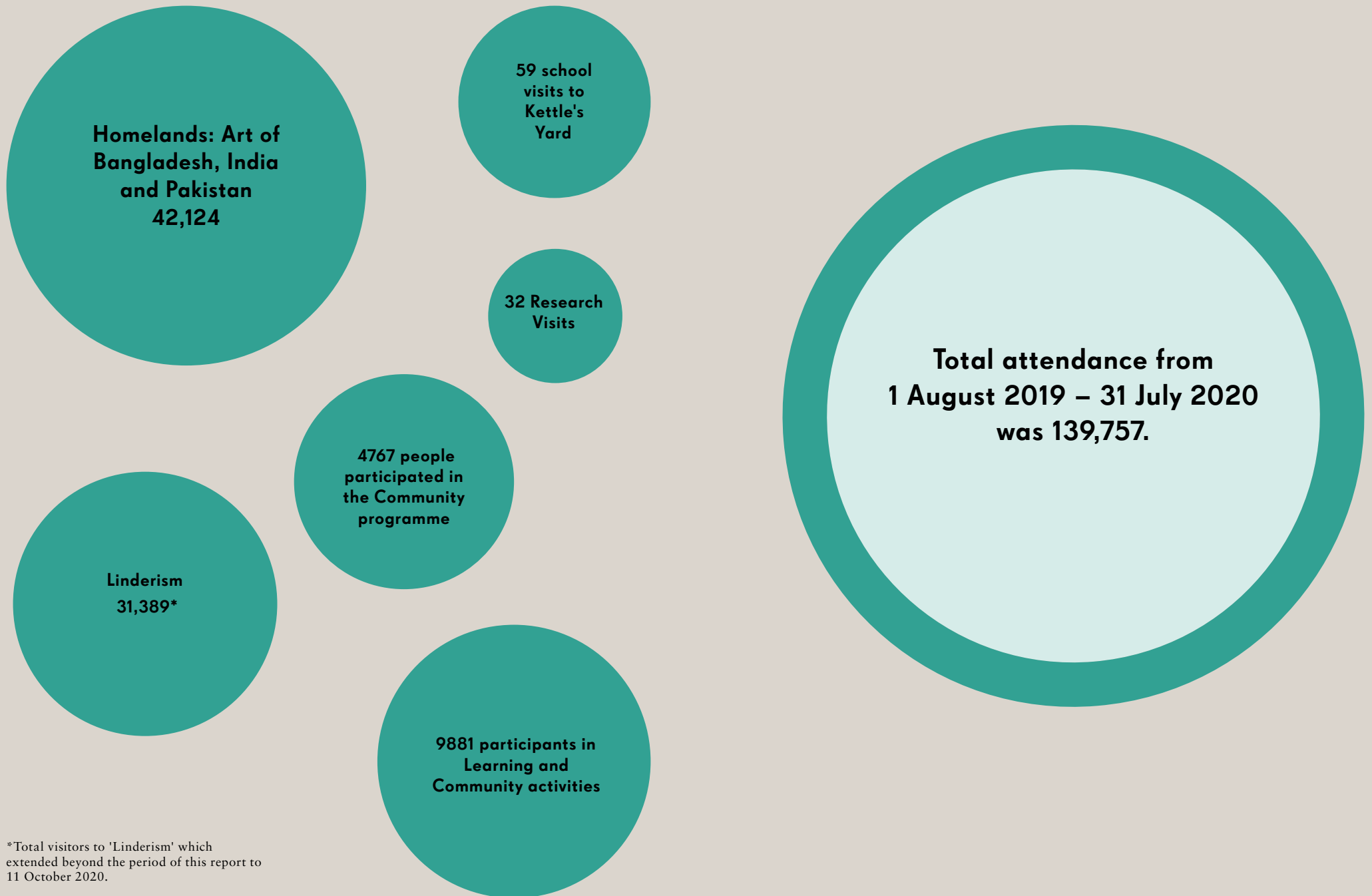
## Holiday Lunches

Throughout 2019 and 2020 Kettle's Yard has continued to provide creative and fun activities for families experiencing 'holiday hunger' in North Cambridge with the Holiday Lunch programme based at the Church of the Good Shepherd in Arbury.

## Kettlers

Artist Lucy Steggals is collaborating with a group of North Cambridge residents, the Kettlers, to creatively explore culture in Cambridge and devise surprises and activities for visitors at Kettle's Yard Community Days. Throughout lockdown the Kettlers stayed connected through bi-weekly conference telephone calls with Steggals and Kettle's Yard.

# Attendance



\*Total visitors to 'Linderism' which extended beyond the period of this report to 11 October 2020.

# Communications

During 2019/20 we continued to develop new materials to market Kettle's Yard - producing posters and a calendar for each exhibition. At the start of 2020 we adopted a greener approach, creating a smaller calendar which uses less paper and moved to digital only invitations.

We began using a bolder approach for the two music programmes, and introduced a new leaflet for Venue Hire.

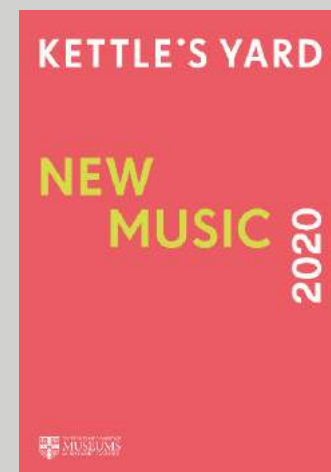
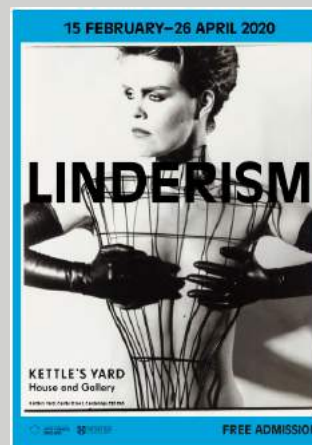
Student ambassadors continued to actively promote Kettle's Yard in their colleges and departments.

## Digital

During 2019/20 digital marketing became a top priority as we moved towards a more digitally centred approach. The March 2020 Covid-19 lockdown offered the opportunity to produce new, online marketing content for exhibitions including films, GIFs and a webcam installed in the House. A 'Kettle's Yard at Home' webpage was created as a space for visitors to experience Kettle's Yard online. We also increased the frequency of our e-marketing which we found to be extremely successful during this period.

Instagram remained the most influential digital marketing tool in this period and followers grew by 53%.

From 1 August 2019 – 31 July 2020 we had 979,709 unique page views on the website. This is a percentage increase on the same period last year of 26.5%.





# Visitor Comments

**Suzanne Paul** @suz\_paul · Jun 25  
Mermaids, art, trans lives and medieval sculpture - blogpost for Pride month by Lijja Addeman @kettlesyard:



2/3 Pride Month: Exploring the Kettle's Yard Collect...  
Visitor Services Manager and Volunteer Coordinator, Lijja Addeman, shares some reflections on Kettle's ...  
kettlesyard.co.uk


**George the Hermit** @senorctulhu · Jun 25  
I've really enjoyed reading two blog posts about queer items within the @kettlesyard collections here in Cambridge and I wanted to share on all about gender fluidity and mer-people!



2/3 Pride Month: Exploring the Kettle's Yard Collect...  
Visitor Services Manager and Volunteer Coordinator, Lijja Addeman, shares some reflections on Kettle's ...  
kettlesyard.co.uk

**'I can't praise the staff enough for making my visit so memorable. I was in a wheelchair and staff were wonderful – they made everything come alive for me.'**  
– Visitor, February 2020

**Greg W** wrote a review 19 Jan  
Cambridge, United Kingdom · 2,574 contributions · 1,212 helpful votes



**Knowledgeable staff**

Took a tour through Jim Ede's Home where you can immerse yourself in his terrific collection of artwork. The house is as Jim Ede left it and open to the public free of charge to tour. The unique aspect to the house is there are no labels or pointers: this leaves you to self-interpret and link pieces together which compliment one another. Artwork is found everywhere throughout. The tour can last as long as you want to peruse every corner of the property.

**Date of experience:** January 2020  
**Trip type:** Travelled solo

**W267Qalciab** Herwich, United Kingdom · 3

Reviewed 4 weeks ago via mobile

**A Cambs must see!**

Managed to get a sneaky private viewing for my course which made it extra special as it was just us for a little while. I must say I never thought I'd be as interested in watching shadows move as I was, could've stayed in the main house all day. Really informative tour and all questions were answered in great depth. Amazing atmosphere, almost indescribable. Will definitely go back!

**Date of experience:** December 2019



Ask W267Qalciab about Kettle's Yard House and Gallery


Thank W267Qalciab

Published by Helen Dickman · Yesterday at 14:40

We are delighted to announce that we now have a webcam in the Kettle's Yard House, looking towards the small conservatory of plants, pebbles, shells and artworks.

The feed will be live daily between 5.30am and 5.30pm whilst we are closed, allowing you to experience a bit of Kettle's Yard from your own home. We hope that you can enjoy the peacefulness of the House, and watch the light changing throughout the day.

The webcam was inspired by a suggestion from @polsburke wh...  
See more



KETTLESYARD.CO.UK  
**Kettle's Yard Webcam – Kettle's Yard**  
Coronavirus Temporary Closure: Please note that Kettle's Yard House an...

Get more likes, comments and shares  
This post is performing better than 90% of other posts on your Page. Boost it to get more great results.

2,587 People reached · 444 Engagements · Boost Post

5 comments · 21 shares

Like · Comment · Share

Most relevant

Comment as Kettle's Yard

Caroline Lee Such a wonderful idea. One of my favourite places to be and super to return this way in these difficult times. Thank you! 🙏

Like · Reply · Message · 1d

Lesley Dodd Thanks for doing this - it's always been one of my favourite spots in the house, too.

Like · Reply · Message · 6h

**Wonderful visit. Every member of staff from the smile at reception when we walked in, to the café and gallery attendants were delightful, friendly and informative. Can't wait to visit again.'**  
– Visitor, January 2020

**Sue John** @SueJohnGWL · Apr 24

And also not to be missed - this online guided tour of the brilliant #Linderism exhibition @kettlesyard



Linderism Exhibition Tour with Curator, Amy Tobin  
Join Kettle's Yard curator, Amy Tobin, for an introductory guided tour of the exhibition. Content ...  
youtube.com

2 · 2

Show this thread

**'Unforgettable first visit to the magical @kettlesyard. Thank you for such a warm welcome to the House of our dreams, coming back very soon!'** – Visitor, November 2019

**Marsyas Trio** @MarsyasTrio · May 21

Really enjoying listening to @tippetquartet @EmmaAbbatePiano @ConsoneQuartet @alasdairbeatson on these other @kettlesyard Spotify playlists 🍷



Kettle's Yard Chamber Music Playlists – Kettle's Yard  
We are so sorry to have had to cancel our Chamber Music concerts at Kettle's Yard for the 2020 summ...  
kettlesyard.co.uk

1 · 2

Show this thread

**'Returned after 10 years hoping that Jim Ede's vision was intact and thankfully it is. One of the best art galleries in the country as it has a definite concept and style. It does not overwhelm the visitor with too many works and all displayed in a very original way. Inspiring.'** – Tripadvisor, October 2019

**Jo Underhill** @JoStructuraleye · 5m

This is fantastic, really looking forward to visiting again.

**Kettle's Yard** @kettlesyard · 1h

Who's spotted the new windows at Kettle's Yard? As part of the #CampaignForEmpathy @ennikukka asks 'Can physical distance bring us closer?' and 'Who do we want to be when the doors open again?'



1

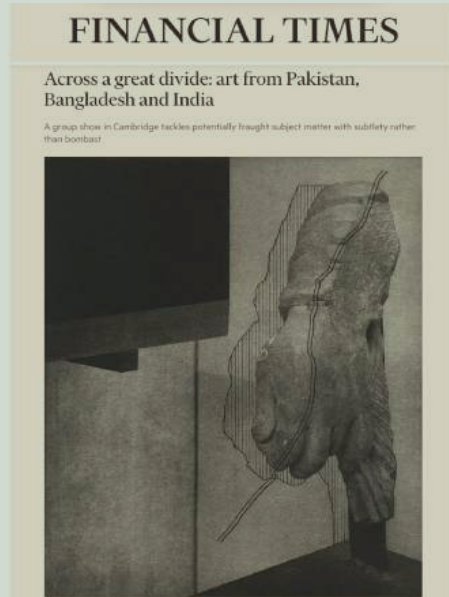
**King's Ely** @Kings\_Ely · 1h

Our Year 7 King's Ely Junior pupils enjoyed an #art trip to @kettlesyard in #Cambridge yesterday (Thursday)! 🎨 Full report and more photos on our Facebook page: [bit.ly/2TIOEE8](https://bit.ly/2TIOEE8)



# Media Coverage

In 2019-20 Kettle's Yard continue to receive wide-spread attention in the press with articles, previews and reviews of exhibitions in newspapers including The Guardian, The Times and the Financial Times, as well as coverage in specialist arts press such as Apollo and Frieze alongside regular pieces in local and life style publications. In December 2020 we also received media coverage about the Kettle's Yard shop including a piece in Museums Journal.



**'Kettle's Yard in Cambridge can justifiably claim to be a landmark too - certainly going by the sheer number of pilgrims it now attracts.'**

- The World of Interiors, June 2020

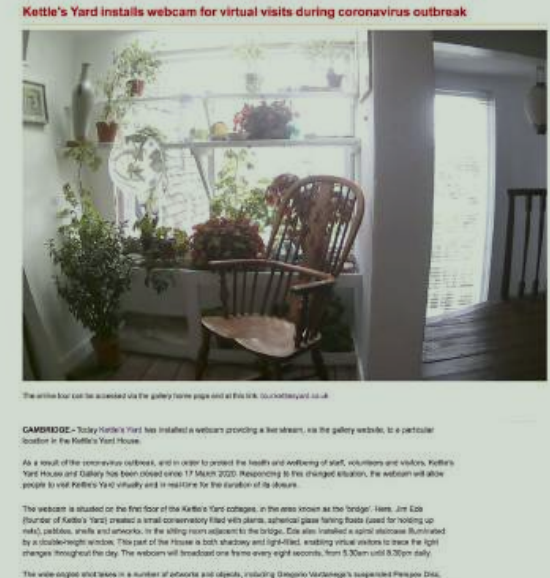


One of the portraits from Sarah-Jane's 'Close to the Heart' series, 2014, hanging in the gallery during winter at Kettle's. © Sarah-Jane



**'For Linder, on the other hand, invisibility is definitely no longer an option. "I think she's the most relevant artist of our times" says Gray..'**

- The Guardian, January 2020



**'The House itself evades description... It still feels far more like a home than a traditional gallery. I think that's what makes it so special to students, often living away from home for the first time.'**

-Varsity, November 2019





# Governance & Staffing

## Staff

In 2019 we welcomed Helen Dickman as Communications Assistant, Gavin Leuzzi and Erica Davletov who joined the front of house team and Karina Sawyer as Retail Assistant. In addition, Alina Khakoo joined the curatorial team on a temporary basis.

In 2020 we said goodbye to Francesca Bertolotti-Bailey, Lucia Hutton and Grace Storey from the curatorial team and Elizabeth King who provided temporary support as Assistant to the Director. We welcomed back Jennifer Powell who returned from maternity leave.

At July 2020 we had 13 full time and 35 part time members of staff.

## Kettle's Yard Committee

This year the Kettle's Yard committee remained stable, with a small number of changes. Geoff Ward stepped down from the committee once his temporary position as Director of the Fitzwilliam Museum had drawn to an end and Polly Blakesely also resigned her membership. We welcomed Caroline van Eck as Head of the Department of History of Art.

The committee at July 2020 comprised:

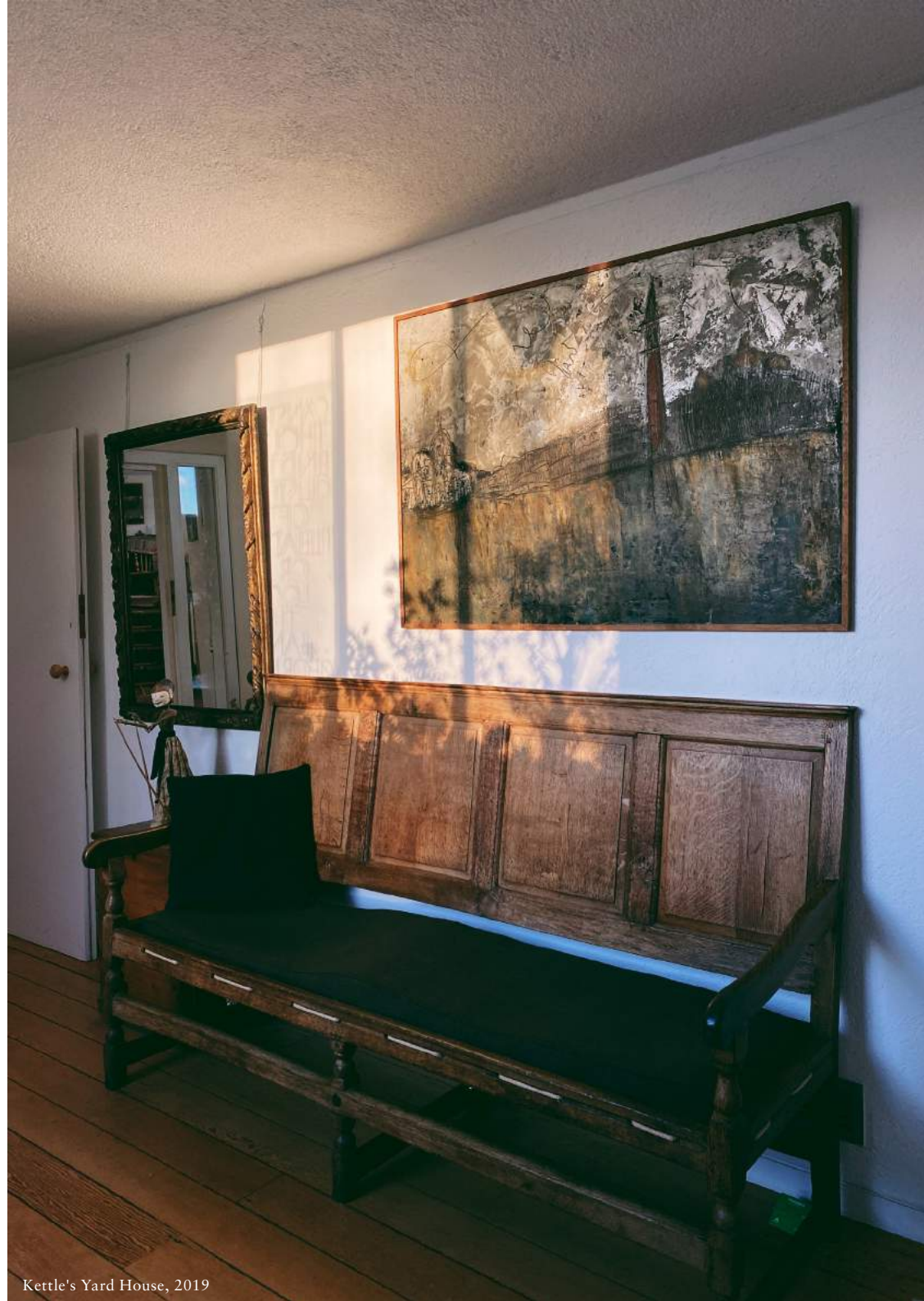
Rowan Williams (Chair), Marjolein Allen, Malavika Anderson, Helen Harwood, Favaad Iqbal, Sabine Jaccaud, Antoinette Jackson, Rachel Kent, Toby Smeeton, Beckie Smith, Luke Syson, Caroline van Eck and Richard Wilson.

The Music Sub-Committee members comprised:

Marjolein Allen (Chair), Chloe Davidson, Sally Smith, Catherine Sutherland and Simon White.

## Volunteers

Our gratitude goes out to the many volunteers who supported Kettle's Yard activities in 2019/2020.



# Commercial Activity

## Venue Hire

Private House tours continued to be popular and venue hire income continued to grow with bookings from clients including law firms, biomedical companies, patrons groups from other galleries, and fashion shoots. Sadly, the closure due to the pandemic in March 2020 led to the cancellation and postponement of a number of planned venue hires.

We launched our Art and Ideas programme of creative workshops for adults in August 2019. The workshop programme has been very successful and we have held many in-person workshops including kintsugi with Iku Nishikawa, lino printing with Angela Harding and visible mending with Celia Pym.

## Shop

Total shop sales decreased by 23% in 2019/20 on the previous year due to the closure of the physical shop in spring 2020. The online shop however showed impressive growth, with sales increasing by 170% compared to 2018/19 as a result of the surge in online shopping during the pandemic.

The shop worked with artist Linder as part of the *Linderism* exhibition to develop House of Helen, a pop-up section in the shop with exclusive products inspired by Kettle's Yard co-creator Helen Ede.

The shop has continued to work with artists and designers to produce new merchandise, including an exclusive map embroidery kit with Ekta Kaul featuring Kettle's Yard and inspired by the colours of Jim & Helen Ede's former home.

## Café

The café at Kettle's Yard is operated by Swift Kitchen Ltd, trading as The Garden Kitchen. The Garden Kitchen also provides catering to support venue hire bookings and refreshments and a bar service at events. They continued to be successful with income to the gallery from their operations above expected levels until the forced closure as a result of the pandemic.



Chinti & Parker Fashion Shoot, 2020



House of Helen in the Kettle's Yard Shop, photo: Matthew Booth



Alfred Wallis Face Mask, photo: Beth Davis



The Garden Kitchen café bar at *The Cambridge Show* opening

# Funding & Supporters

We are very grateful to all those who have supported exhibitions, projects, joined our Friends and Patron schemes, become corporate partners and donated on site.

## Trusts and Foundations

Esmée Fairbairn continued to fund our community programme Open House. Artist collective Wright & Vandame worked with North Cambridge communities to explore and share ways to care for our physical, mental and social well-being. We are also grateful for the support of Cambridge City Council. This year, Esmée Fairbairn Foundation generously donated an additional grant to support our work with the community in response to Covid 19.

## Patrons

The Patrons continue to be a vital source of regular income for Kettle's Yard contributing £31,000. Their generous support enables us to commission artists, plan conservation projects and deliver an innovative programme. This year we presented a varied events programme, which included visits to the studios of Jennifer Lee and Oscar Murillo as well as the Annual Ede Dinner with guest speaker Dr Rowan Williams, with events moving online from March 2020

## The Friends of Kettle's Yard

The Friends of Kettle's Yard have had another strong year, raising considerable funds through their lively and engaging trips and events. A huge thank you to the Friends committees who work tirelessly to support Kettle's Yard. The Friends contributed £21,000 to Kettle's Yard in 2019/20.

## Exhibition Circles

Exhibition support was received for *The Cambridge Show, Homelands: Art from Bangladesh, India and Pakistan* and *Linderism*. We are particularly grateful for the lead support of Durjoy Bangladesh Foundation for *Homelands: Art from Bangladesh, India and Pakistan*, and the lead support of AstraZeneca for *The Cambridge Show*.

## Partnerships

We also continued to receive valuable financial and in-kind support from Penningtons Manches Cooper LLP, EY, Tayabali & White, Eve Waldron Design, Anna's Flower Farm, A Practice for Everyday Life, and Langham Press.

## Legacies

John Ady left a substantial legacy of artworks to be sold for the benefit of Kettle's Yard. The collection comprised paintings, works on paper, bronzes and ceramics. Ady, a Friend of Kettle's Yard for many years, met Jim Ede in the late 1950s and the two enjoyed a lifelong friendship.

*The Cambridge Show* opening, photo: Josh Murfitt



The Cambridge Show opening, 2019, photo: Josh Murfitt



Nikhil Chopra, Rouge, performance, 2019. Photo: Neena Percy



Homelands: Art from Bangladesh, India and Pakistan, opening event, 2019. Photo: Evelina Gumileva

Maxwell Sterling performing at the Linderism opening event, 2020. Photo: My Linh Le

TOAST: Re-New workshop, photo: Liz Seabrook

TOAST: Re-New dinner in the Kettle's Yard House, photo: My Linh Le



## Supporters 2019/20

Arts Council England  
 Research England  
 University of Cambridge  
 Cambridge City Council  
 Friends of Kettle's Yard  
 Esmée Fairbairn Foundation

### Director's Circle

Dr Carol Atack and Alex van Someren, Sir Charles and Lady Chadwyck-Healey, John and Jennifer Crompton, Guy Vesey

and those who wish to remain anonymous.

### Ede Circle

Hilary Aldred, Michael Allen OBE and Marjolein Wytzes, Stuart Ansell, Roger Bamber, Clodagh and Jonathan Barker, Helaine and Yorick Blumenfeld, Dr Sophie Bowness, Adrian and Leanne Clark, Dr David and Mrs Rosalind Cleavelly, Crane Kalman Gallery, Jennifer Crouch, Dr Claire and Professor Martin Daunton, James Freedman and Anna Kissin, Peter Gerrard, Sean Gorvy and Gael Gorvy Robertson, Dr Claudio Köser, Jenny Little, Tim Llewellyn OBE, Nicki and Christie Marrian, Suling Mead, Professor Keith Moffat, Jonathan and Nicole Scott, Stuart Shave, Alan Swerdlow and Jeremy Greenwood, Toby Smeeton and Anya Waddington, Professor Elizabeth Simpson, Stuart Wilkinson

and those who wish to remain anonymous.

### Corporate Partnerships

Penningtons Manches Cooper LLP  
 EY  
 Tayabali & White  
 Eve Waldron Design  
 Anna's Flower Farm  
 Langham Press

### The Cambridge Show

Astrazeneca  
 Belmacz

### Homelands: Art from Bangladesh, India and Pakistan Supporters Circle

Durjoy Bangladesh Foundation  
 Chandrika Baji Pathak  
 Chatterjee & Lal  
 Hyundai Tate Research Centre:  
 Transnational  
 in partnership with Hyundai Motor  
 Maya Sama  
 Waqas Wajahat  
 Apelles Fund, King's College  
 John and Jennifer Crompton  
 Simon and Midge Palley

### Linderism Supporters Circle

Paul Mellon Centre for Studies in British Art  
 Modern Art  
 Andréhn-Schiptjenko  
 Blum & Poe  
 Dépendance  
 Eve Waldron Design  
 Mendittarosa  
 Carol Atack and Alex van Someren  
 Matt Symonds  
 Zabłudowicz Collection

and those who wish to remain anonymous.

## Thank you to the following



Supported using public funding by  
**ARTS COUNCIL ENGLAND**



TAYABALI & WHITE  
 ACCOUNTANCY | TAX | CONSULTING



EVE WALDRON DESIGN



PAUL MELLON CENTRE  
*for Studies in British Art*



Dr Shirley Ellis

Anna's Flower Farm



# Finances

	Income	Expenditure	Surplus/ (Deficit)
Core funding	1,175,049	1,552,482	(377,433)
Exhibitions	281,992	279,560	2,432
House	1,967	2,571	(604)
Music	67,685	66,437	1,248
Education	13,123	32,529	(19,406)
Community	57,196	52,345	4,851
Individual Giving	84,712	4,858	79,854
Trading	295,325	117,747	177,578
Surplus/(Deficit) before planned expenditure from reserves in 2019–20	1,977,049	2,108,529	(131,480)
Actual expenditure from reserves in 2019-20			156,322
<b>Overall surplus/(deficit) in 2019-20</b>			<b>24,842</b>

## Assets

### Unrestricted Reserves

Balance carried forward	109,830
-------------------------	---------

### Designated Reserves

Balance carried forward	1,505,662
-------------------------	-----------

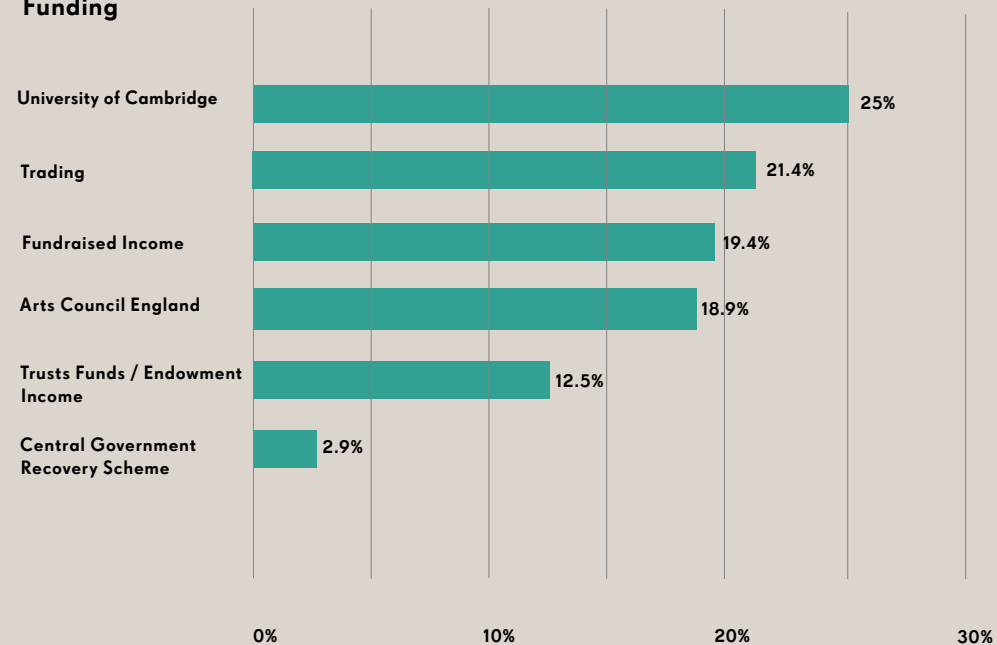
### Permanent Endowment Account

Balance carried forward	5,335,996
-------------------------	-----------

## Total Assets

**6,951,488**

## Funding





*The Cambridge Show*, exhibition opening. Photo: Josh Murfitt